



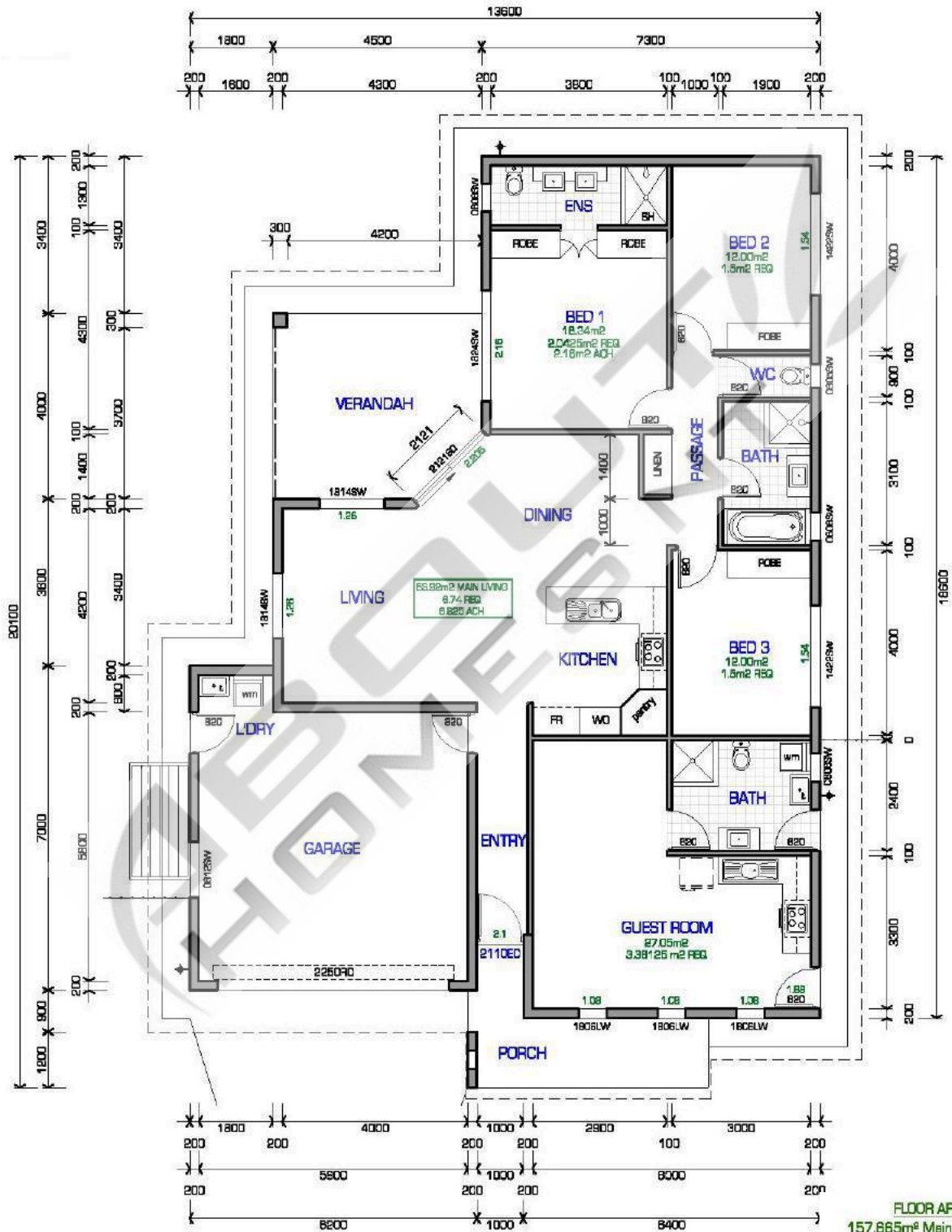
- *Rinnai solar hot water system*
- *DAIKIN inverters throughout*
- *ALU-GARD security screens*
- *Smeg kitchen appliances*
- *Semi-framed shower screens*
- *Floor to ceiling tiling in bathrooms*
- *Exposed aggregate concrete all external*
- *Build-in laundry cabinet*
- *caesarstone benchtops*
- *...and much much more*



About Homes NT is your trusted Darwin home builder. We bring over 30 years of building experience to deliver quality homes that are functional and beautiful to Darwin and Palmerston residence.

VIGGLES VILLA 1

HOUSE WIDTH: 13.8M - HOUSE LENGTH: 20.1M - TOTAL FLOOR AREA: 222.14M²

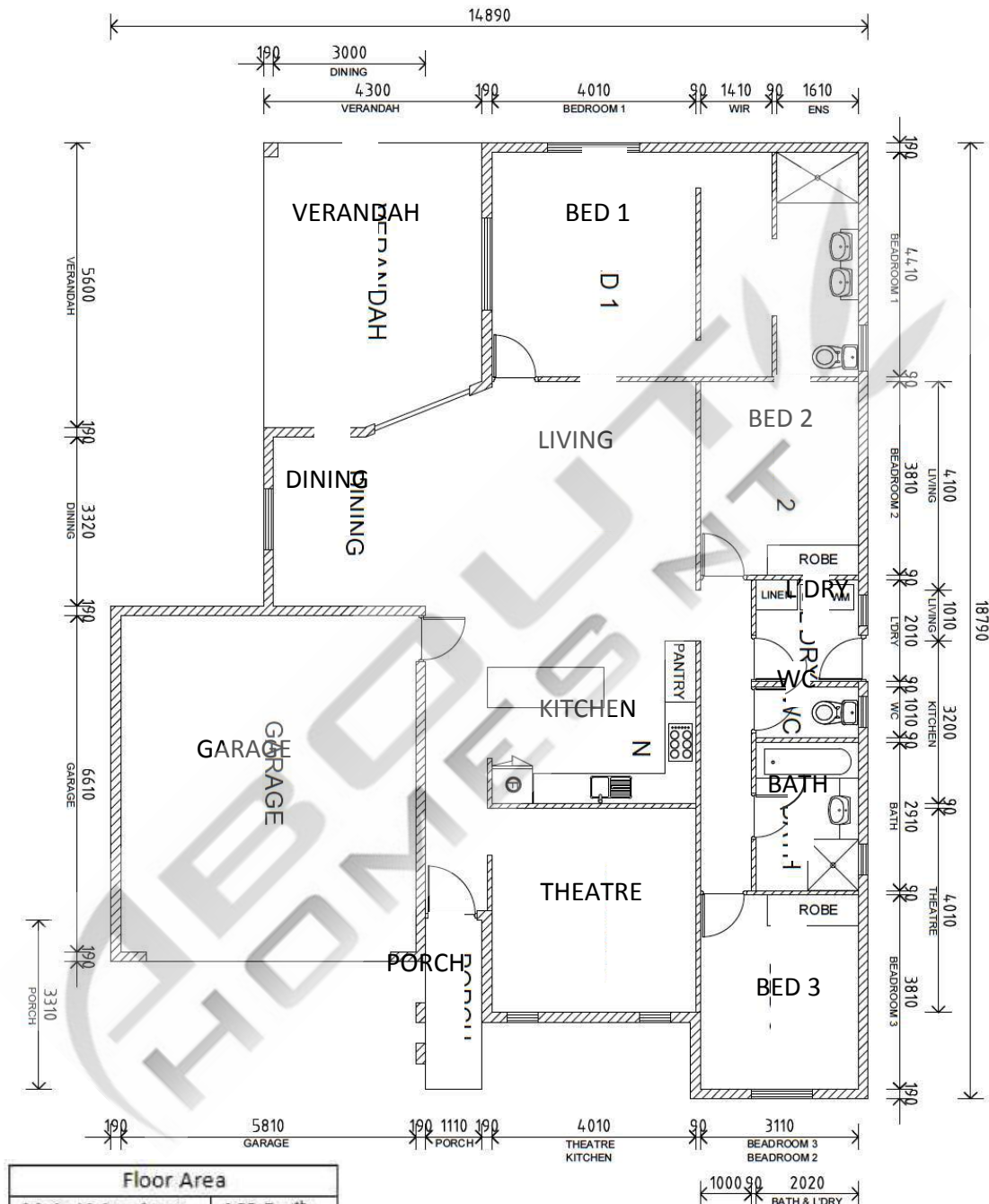


FLOOR AREAS

157.865m² Main Living Area
 38.00m² Garage / L'dry Area
 16.875m² Verandah Area
 9.60m² Front Porch Area
 222.14m² Total Floor Area

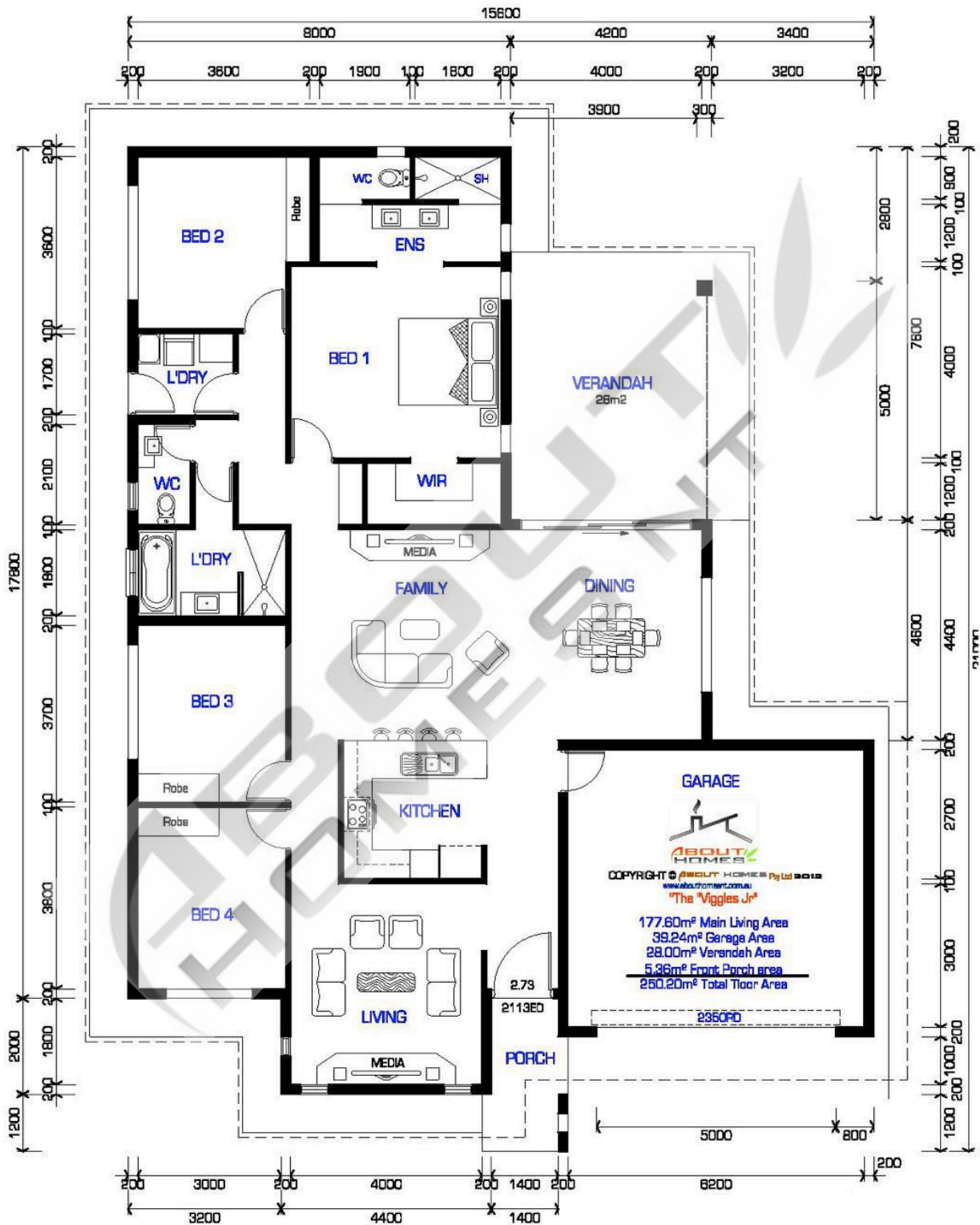
VIGGLES VILLA 2

HOUSE WIDTH: 14.9M - HOUSE LENGTH: 18.8M - TOTAL FLOOR AREA: 232.8M²



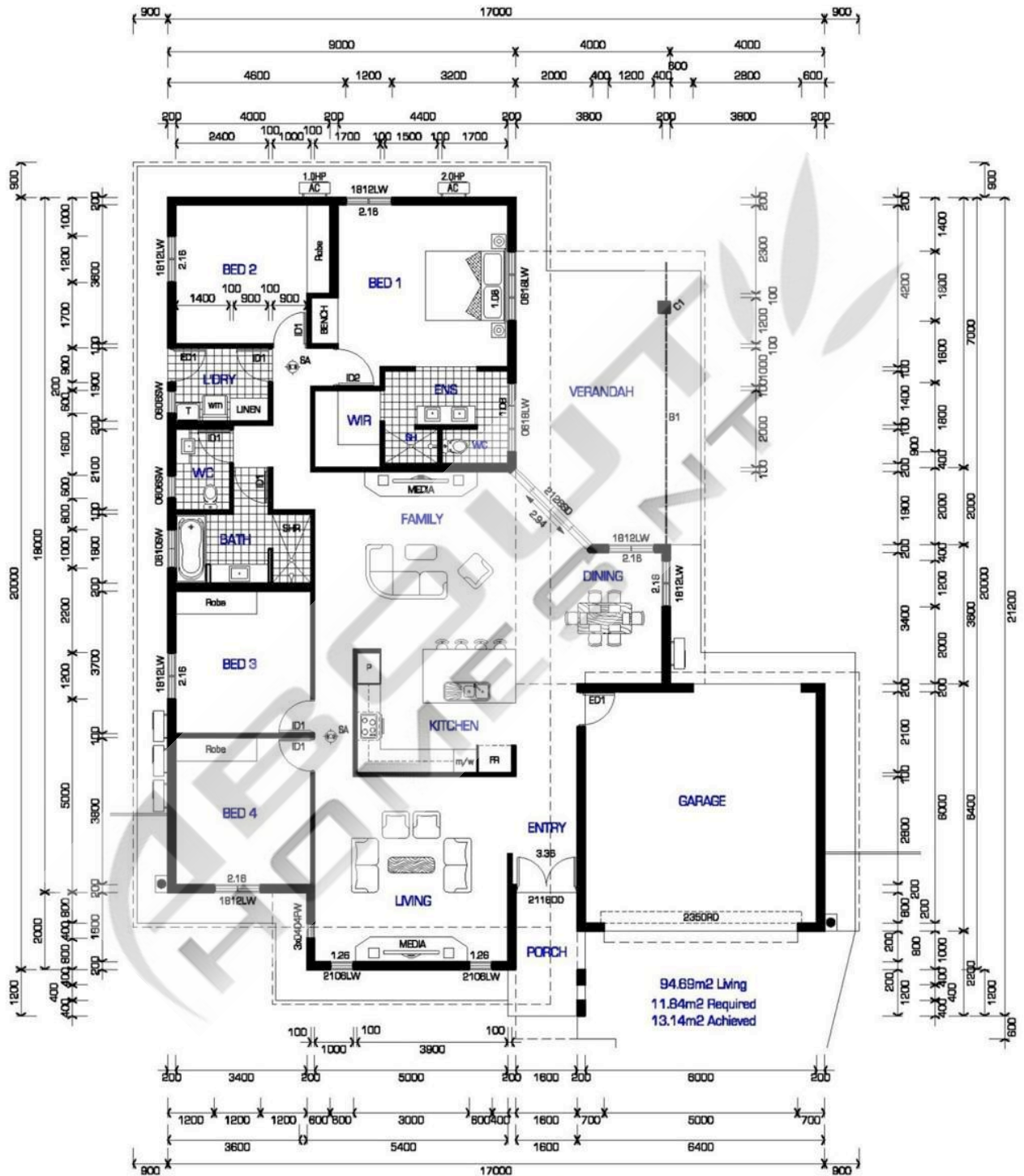
VIGGLES VILLA 3

HOUSE WIDTH: 15.6M - HOUSE LENGTH: 21M - TOTAL FLOOR AREA: 250.20M²



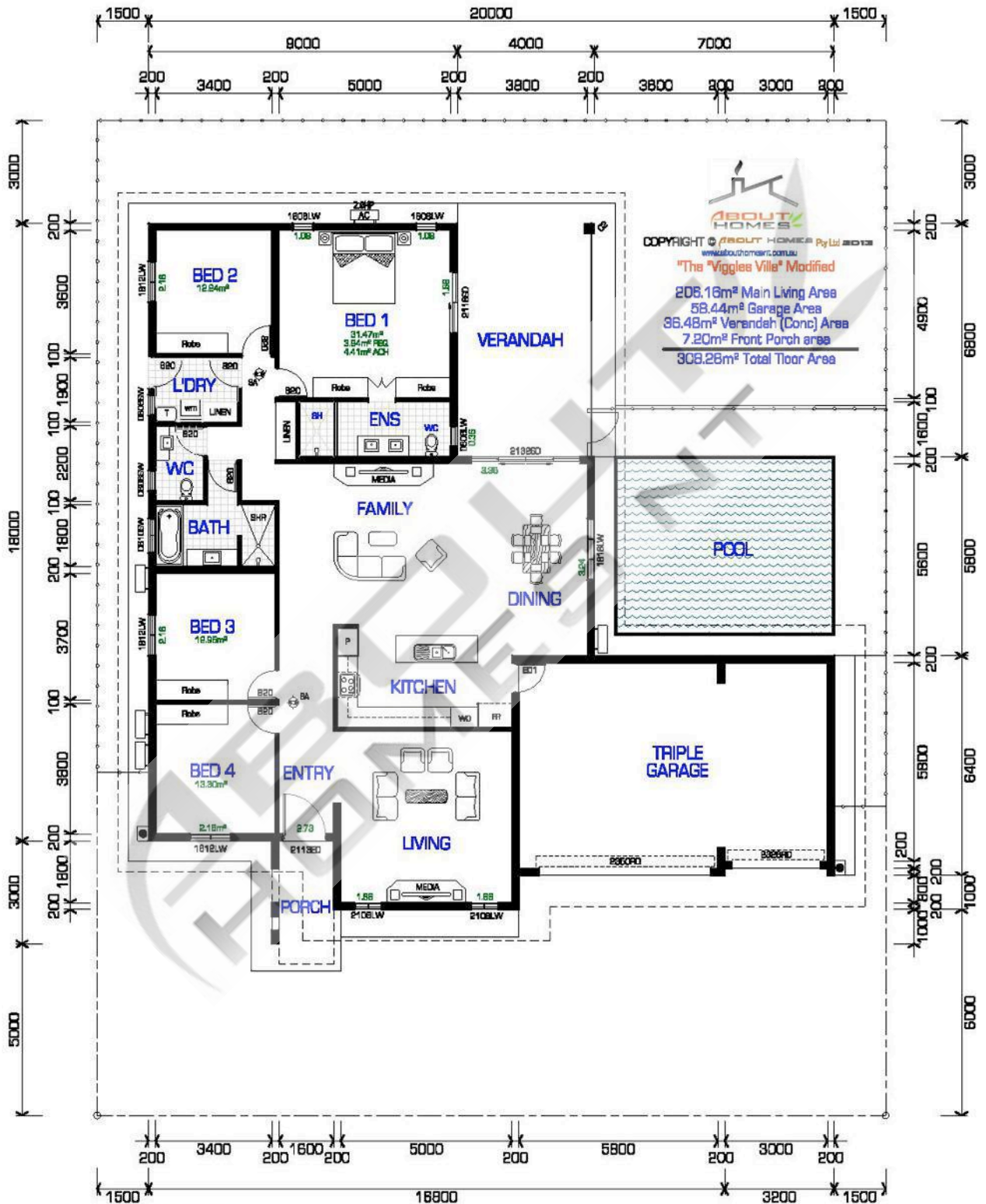
VIGGLES VILLA 4

HOUSE WIDTH: 17M - HOUSE LENGTH: 21.2M - TOTAL FLOOR AREA: 267.12M²



VIGGLES VILLA 5

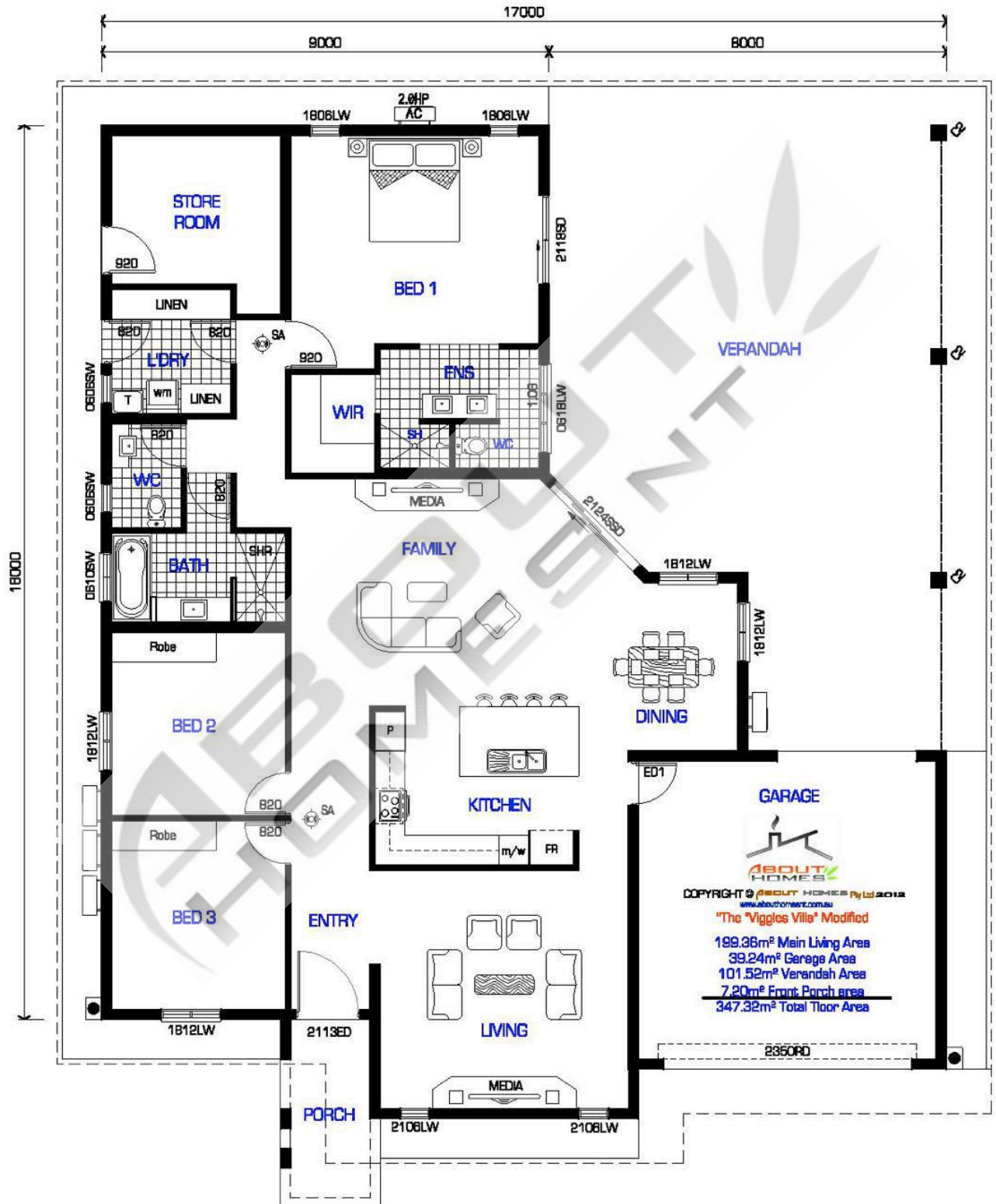
HOUSE WIDTH: 20M - HOUSE LENGTH: 21M - TOTAL FLOOR AREA: 308.28M²



INT. MAIN LIVING = 101.03m²
12.63m² REQUIRED VENTILATION
12.69m² ACHIEVED VENTILATION

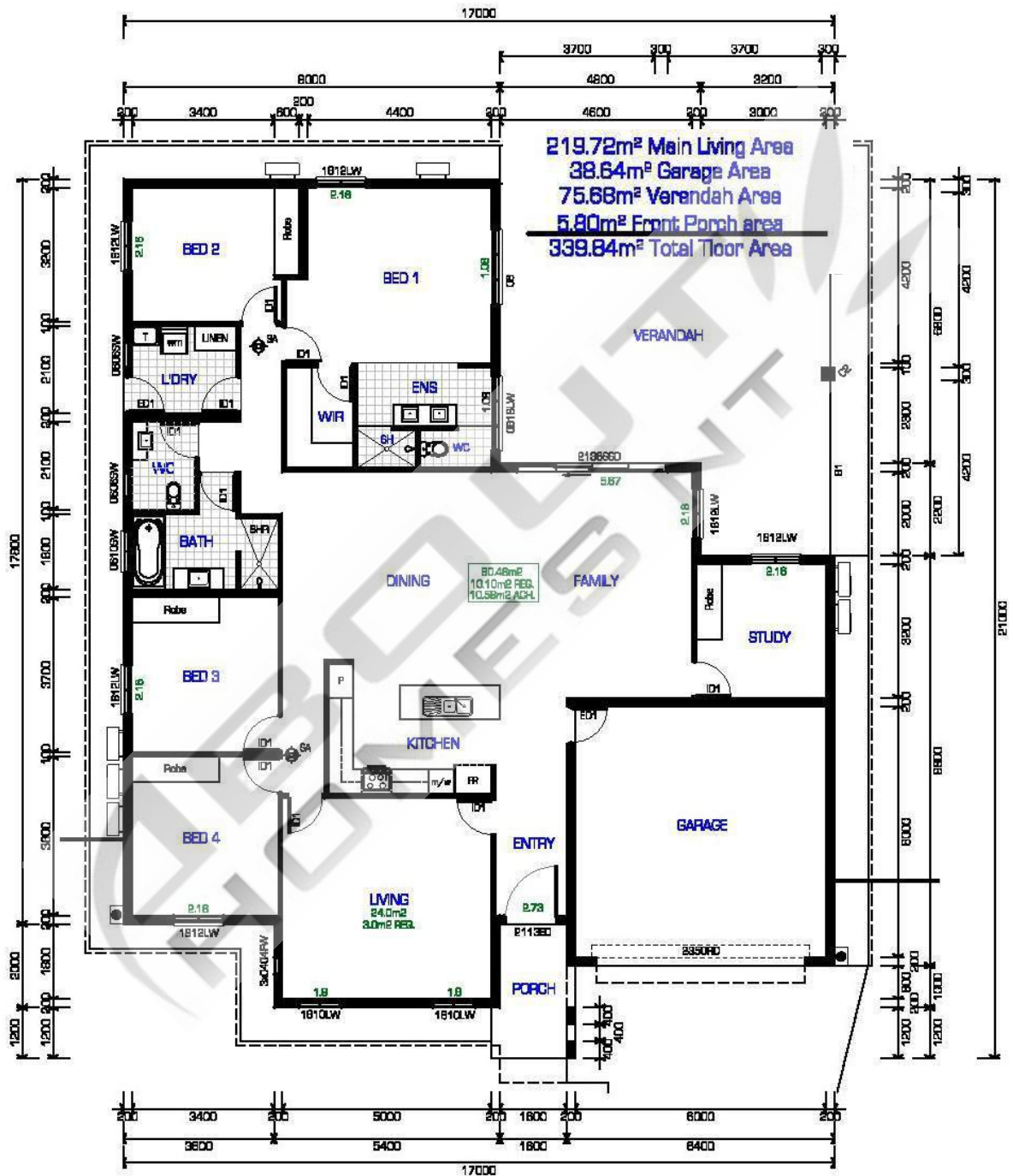
VIGGLES VILLA 6

HOUSE WIDTH: 17M - HOUSE LENGTH: 21M - TOTAL FLOOR AREA: 347.32M2



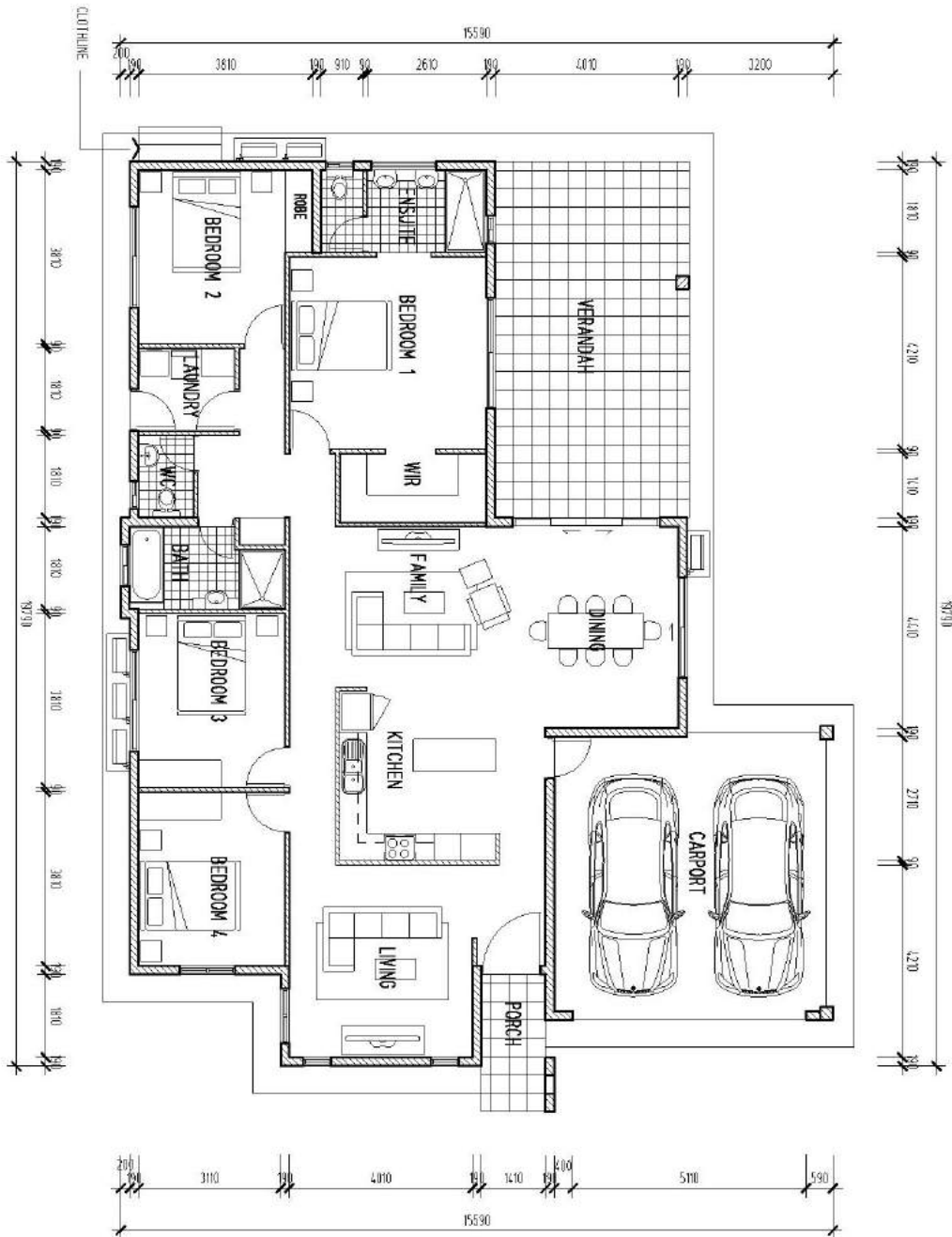
VIGGLES VILLA 7

HOUSE WIDTH: 17M - HOUSE LENGTH: 21M - TOTAL FLOOR AREA: 339.84M²



VIGGLES VILLA 8

HOUSE WIDTH: 15,6M - HOUSE LENGTH: 19,8M - TOTAL FLOOR AREA: 239,65M2



FLOOR AREAS

MAIN FLOOR AREA	: 166.15 m2
CARPORT	: 35.29 m2
VERANDAH	: 33.98 m2
PORCH	: 4.23 m2
TOTAL FLOOR AREA	: 239.65 m2