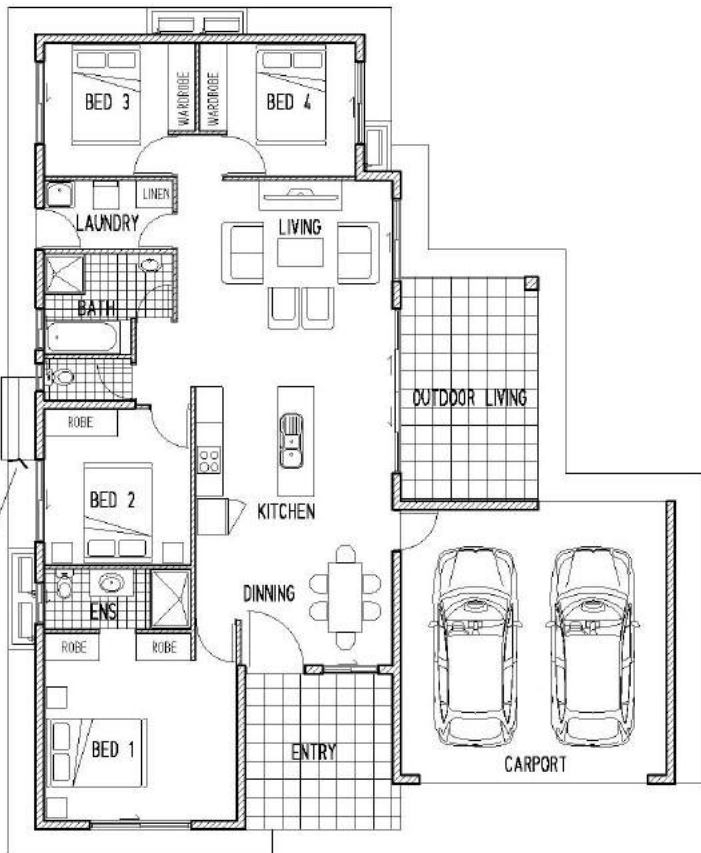




Premium fixtures and inclusions as standard

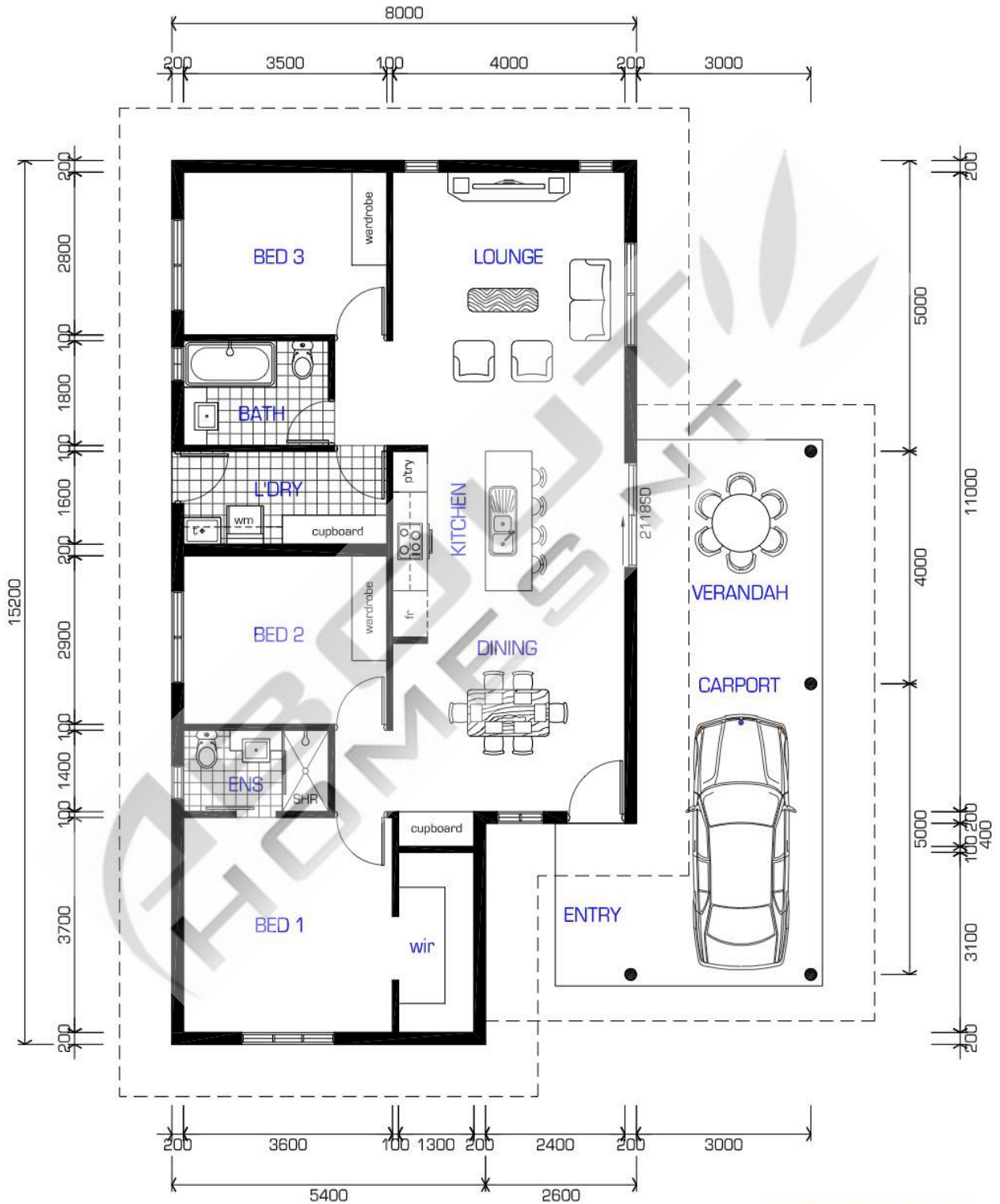
- Rinnai solar hot water system
- DAIKIN inverters throughout
- ALU-GARD security screens
- Smeg kitchen appliances
- Semi-framed shower screens
- Floor to ceiling tiling in bathrooms
- Exposed aggregate concrete all external
- Build-in laundry cabinet
- caesarstone benchtops
- ...and much much more



About Homes NT is your trusted Darwin home builder. We bring over 30 years of building experience to deliver quality homes that are functional and beautiful to Darwin and Palmerston residence.

TROPICAL KISS 2

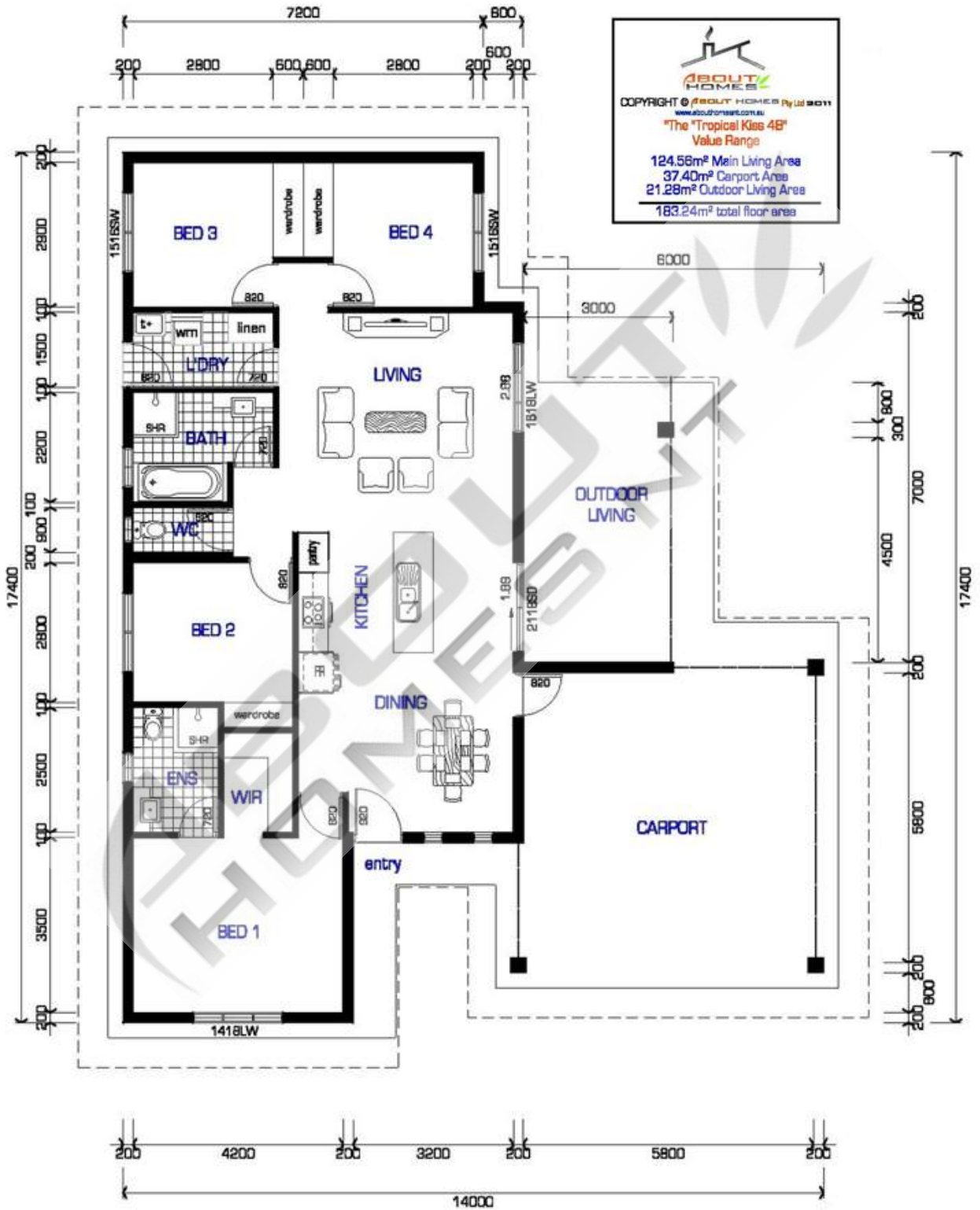
HOUSE WIDTH: 11M - HOUSE LENGTH: 15.2M - TOTAL FLOOR AREA: 145.72M²



111.72m² main living area
 30.08m² carport / verandah area
 3.92m² front porch area
 145.72m² Total Floor Area

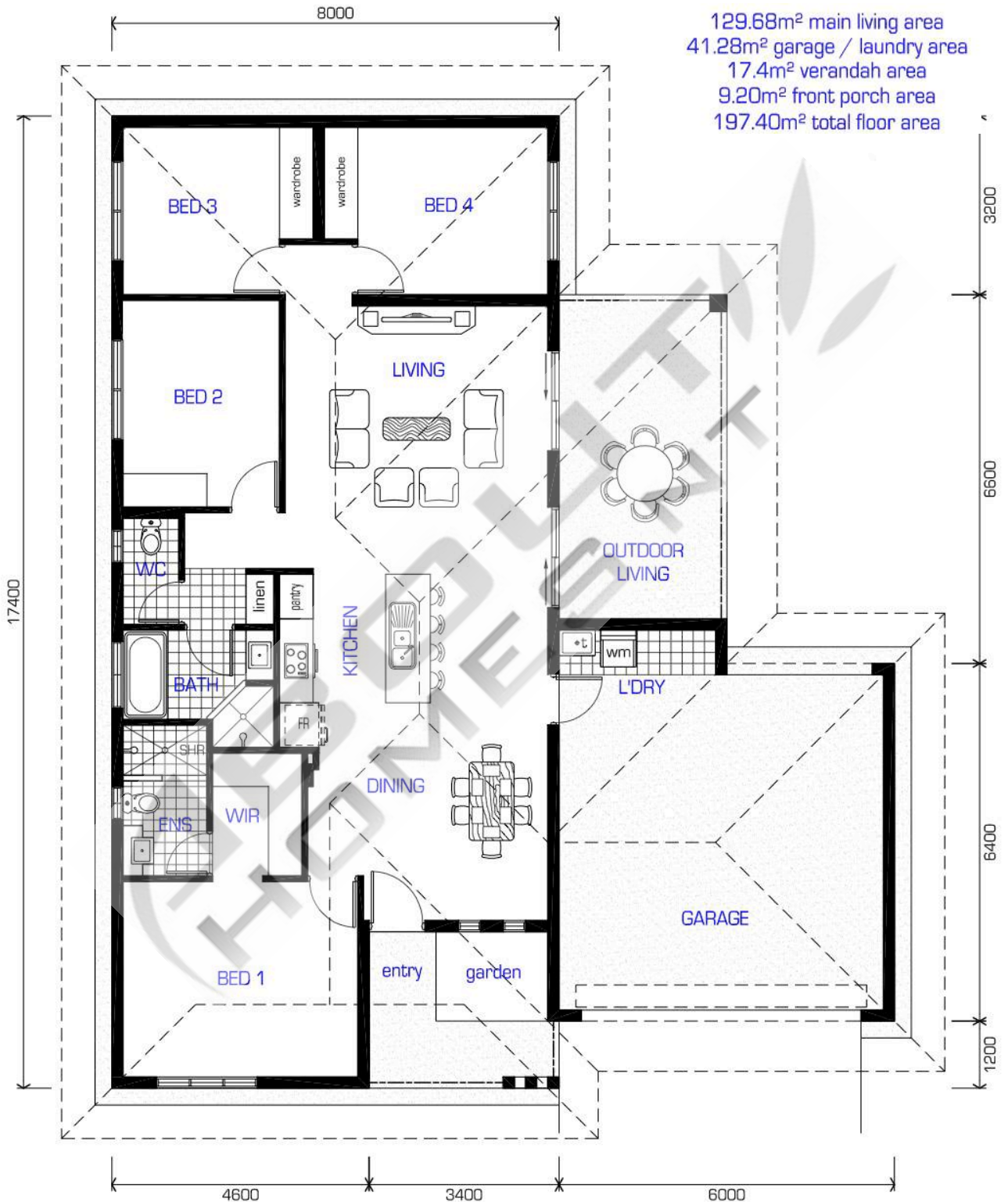
TROPICAL KISS 3

HOUSE WIDTH: 14M - HOUSE LENGTH: 17.4M - TOTAL FLOOR AREA: 183.24M²



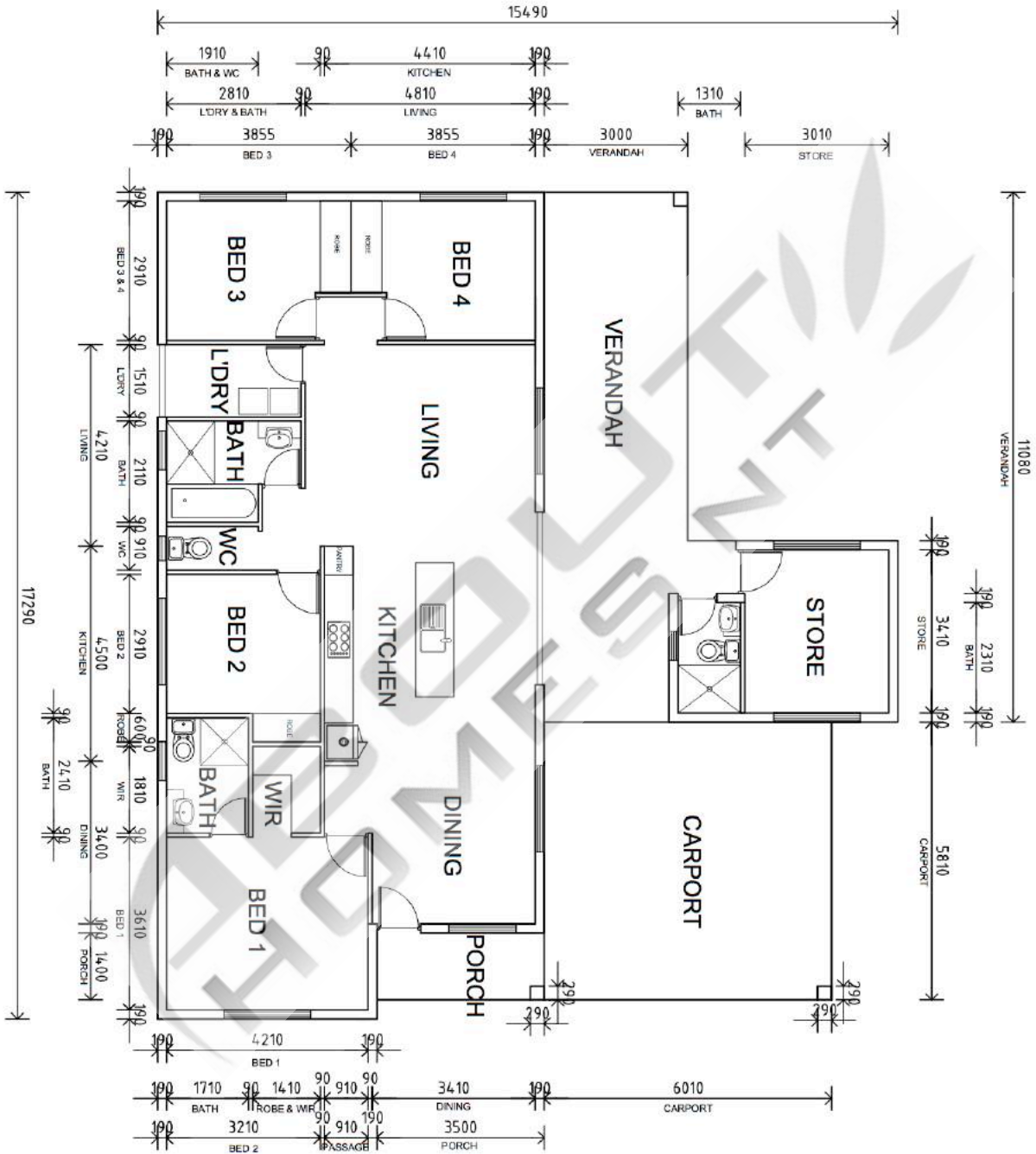
TROPICAL KISS 4

HOUSE WIDTH: 16M - HOUSE LENGTH: 17.4M - TOTAL FLOOR AREA: 197.40M²



TROPICAL KISS 5

HOUSE WIDTH: 15.5M - HOUSE LENGTH: 17.3M - TOTAL FLOOR AREA: 224.09M²



FLOOR AREA	
MAIN LIVING AREA	150.89 M ²
VERANDAH	32.70 M ²
CRAPORT	36.00 M ²
PORCH	4.50 M ²
TOTAL FLOOR AREA	224.09 M ²