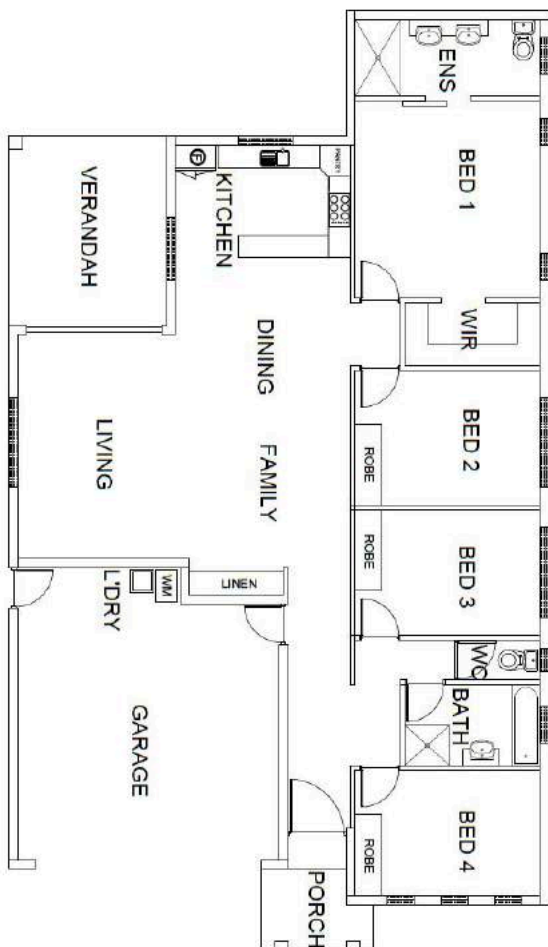




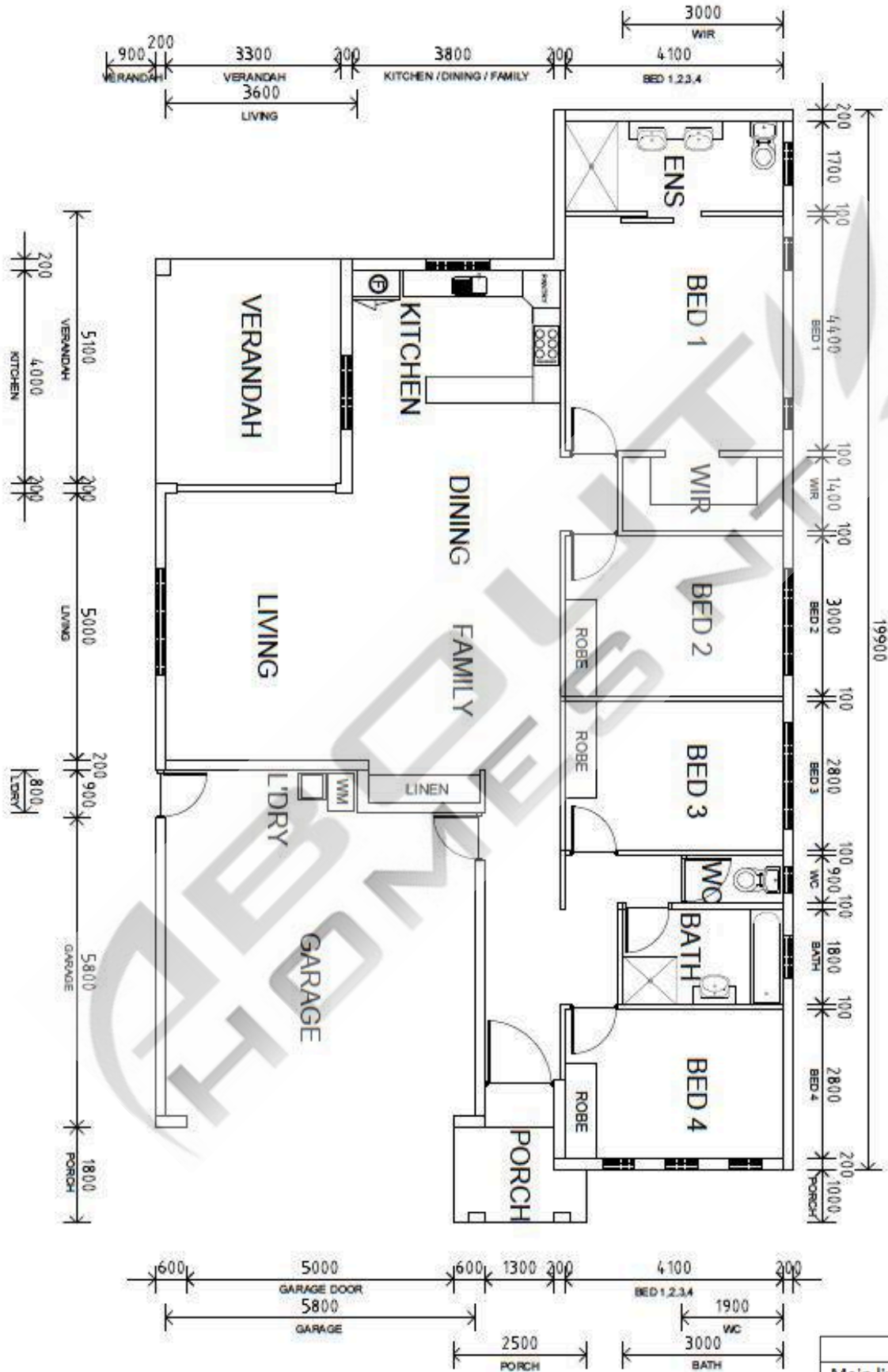
Premium fixtures and inclusions as standard

- Rinnai solar hot water system
- DAIKIN inverters throughout
- ALU-GARD security screens
- Smeg kitchen appliances
- Semi-framed shower screens
- Floor to ceiling tiling in bathrooms
- Exposed aggregate concrete all external
- Build-in laundry cabinet
- caesarstone benchtops
- ...and much much more



About Homes NT is your trusted Darwin home builder. We bring over 30 years of building experience to deliver quality homes that are functional and beautiful to Darwin and Palmerston residence.

TEXAN 1
 HOUSE WIDTH: 12m - HOUSE LENGTH 19,9m - TOTAL FLOOR AREA: 216,84m²



Area Schedule	
Main living arrears	157.7 m ²
Verandah	14.7 m ²
Garage	39.2 m ²
Porch	5.24 m ²
Total	216.84 m²