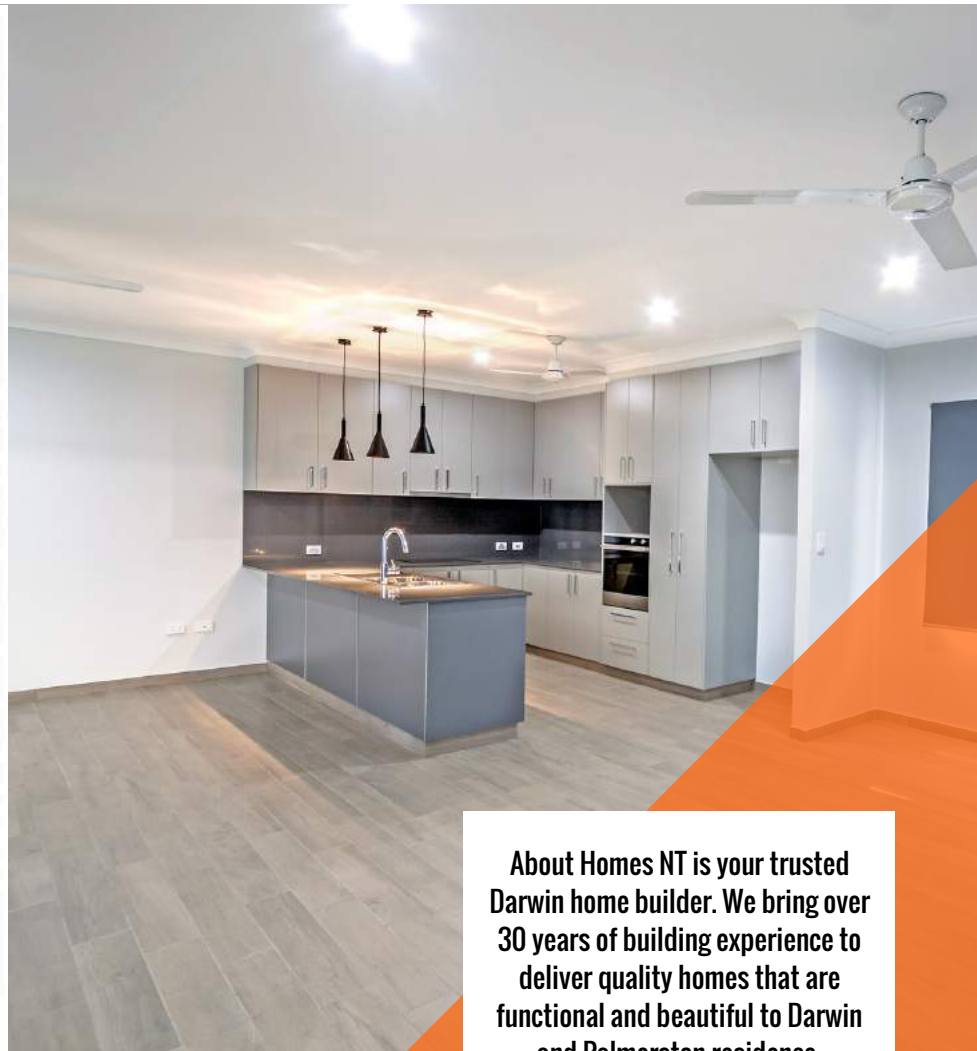




Premium fixtures and inclusions as standard

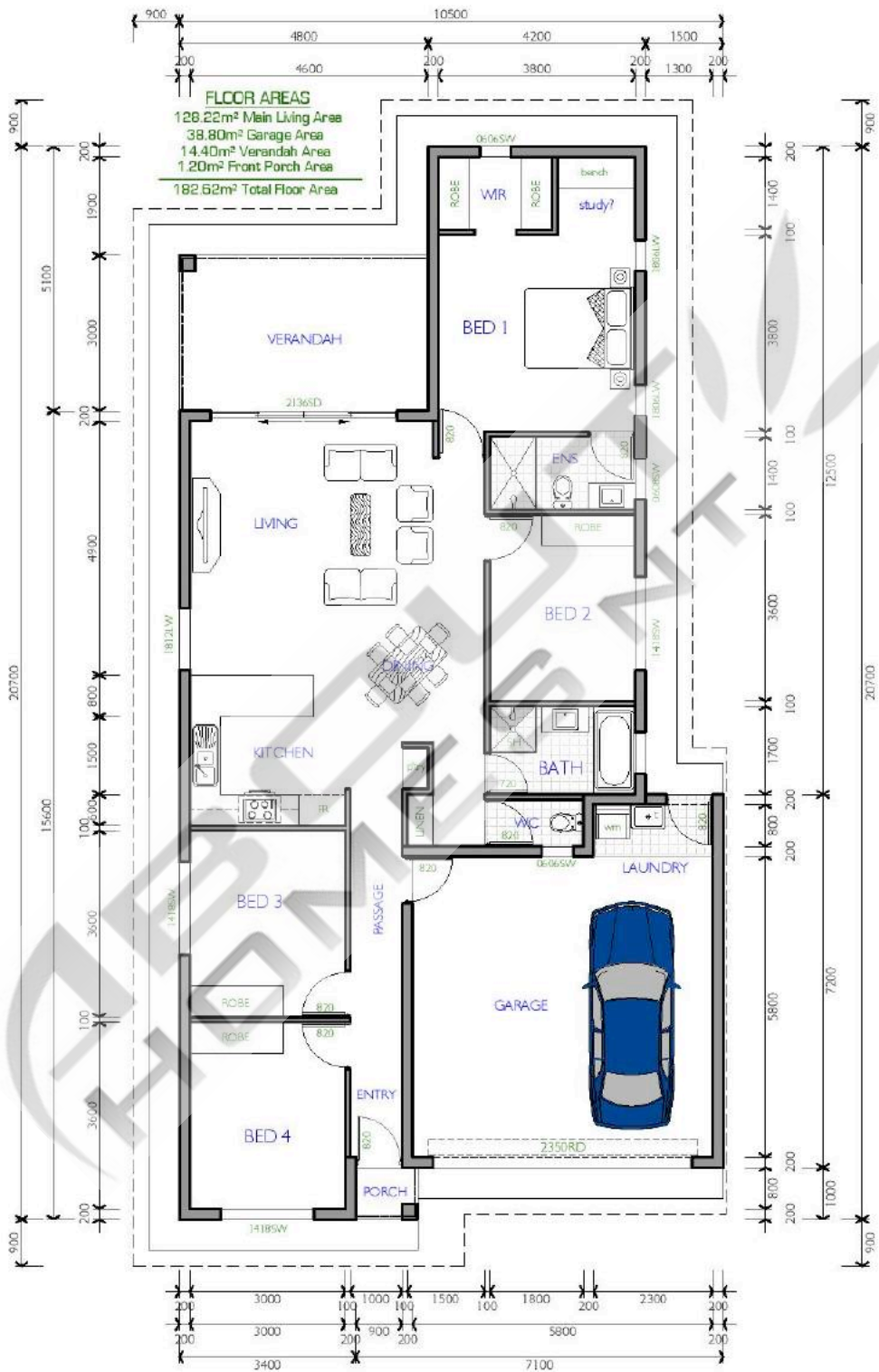
- Rinnai solar hot water system
- DAIKIN inverters throughout
- ALU-GARD security screens
- Smeg kitchen appliances
- Semi-framed shower screens
- Floor to ceiling tiling in bathrooms
- Exposed aggregate concrete all external
- Build-in laundry cabinet
- caesarstone benchtops
- ...and much much more



About Homes NT is your trusted Darwin home builder. We bring over 30 years of building experience to deliver quality homes that are functional and beautiful to Darwin and Palmerston residence.

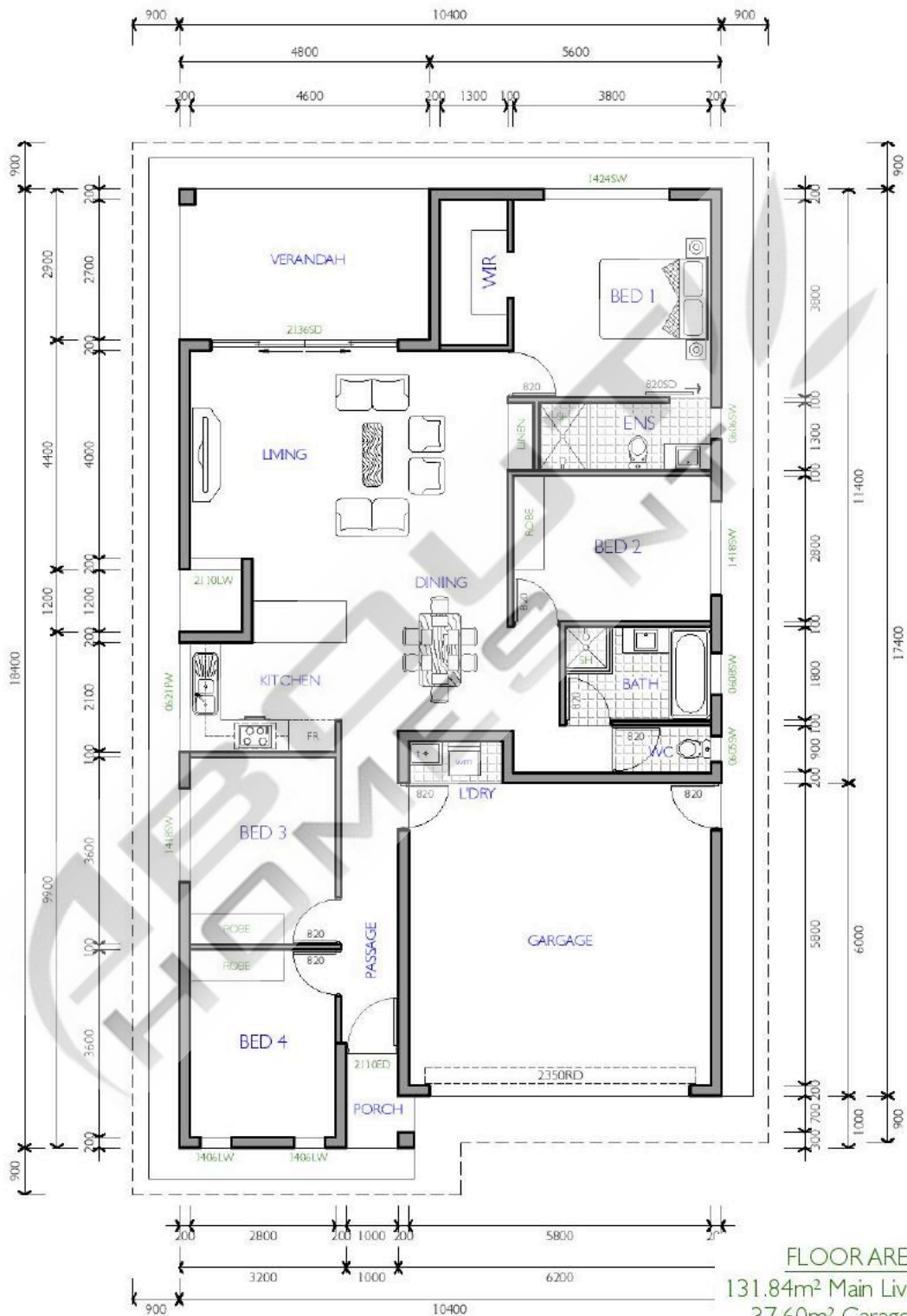
RETRO 1

HOUSE WIDTH: 10.5M - HOUSE LENGTH: 20.7M - TOTAL FLOOR AREA: 182.62M²



RETRO 2

HOUSE WIDTH: 10.4M - HOUSE LENGTH: 18.4M - TOTAL FLOOR AREA: 185.46M²



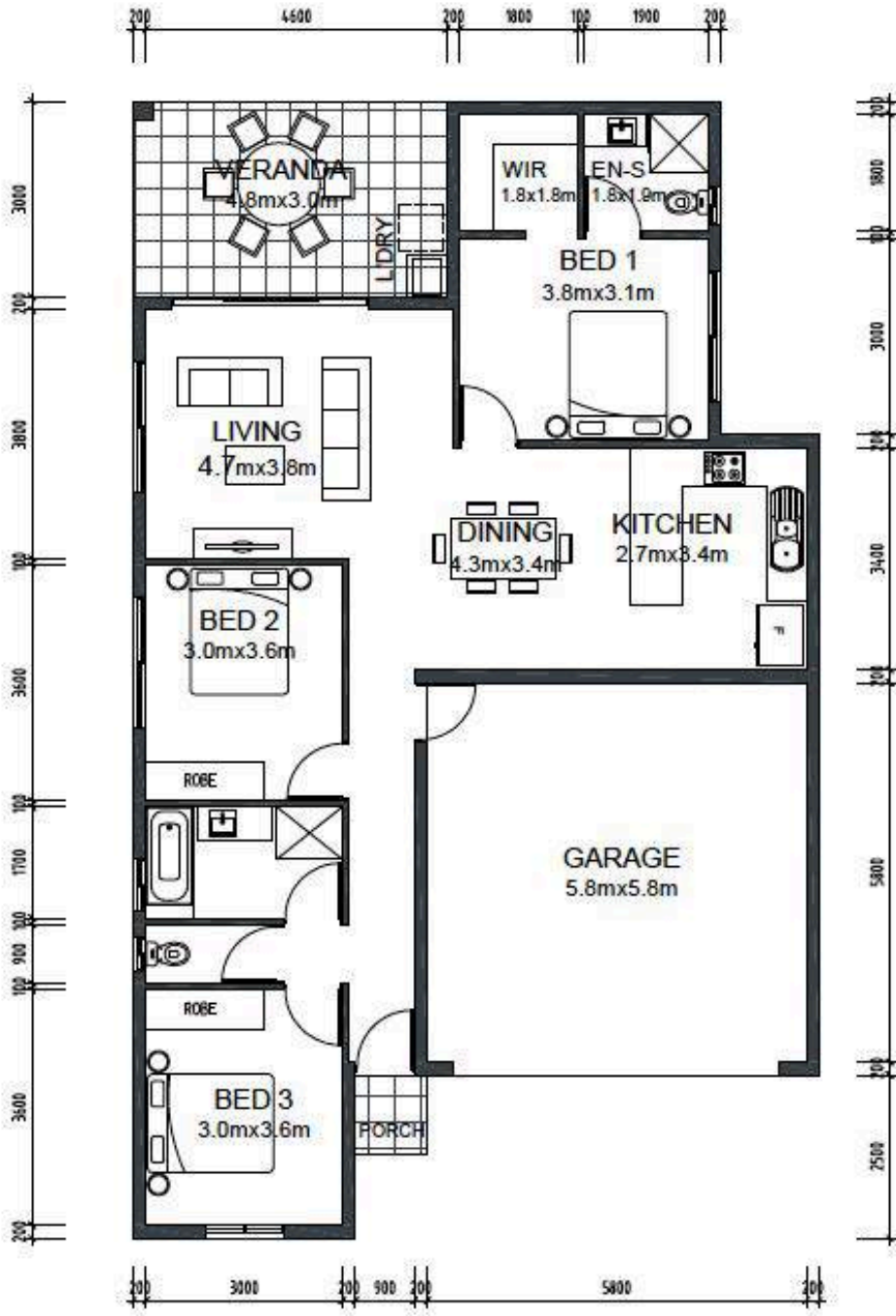
FLOOR AREAS

- 131.84m² Main Living Area
- 37.60m² Garage Area
- 13.92m² Verandah Area
- 2.10m² Verandah Area

- 185.46m² Total Floor Area

RETRO 3

HOUSE WIDTH: 10.5M - HOUSE LENGTH: 17.4M - TOTAL FLOOR AREA: 158.62M²



DIMENSIONS	
LENGTH:	17.4m
WIDTH:	10.5m
TOTAL AREA:	158.62m ²