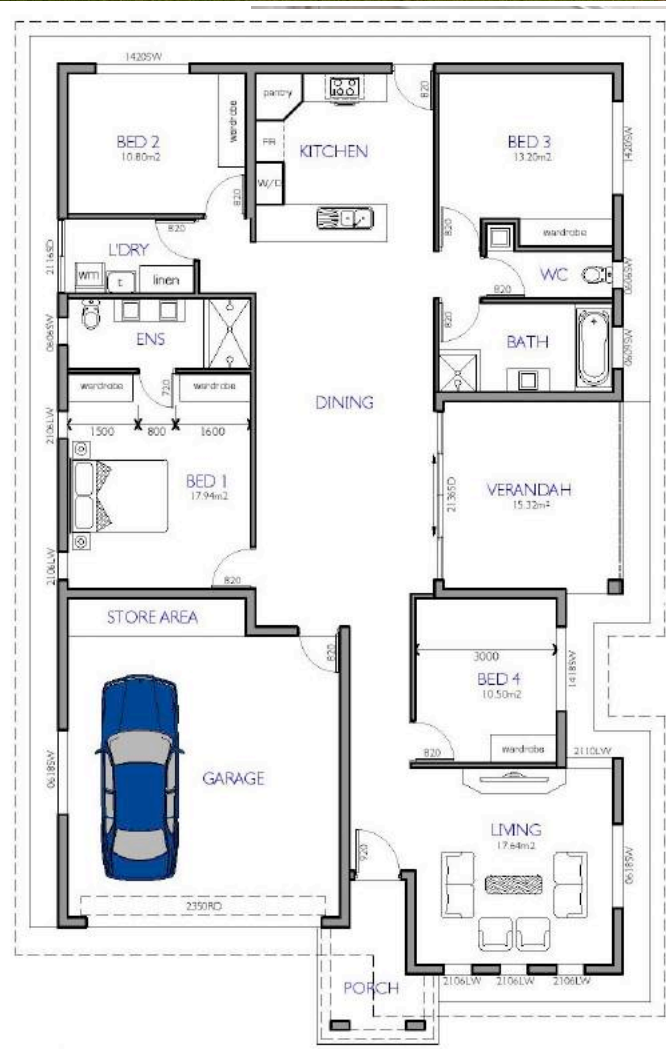




Premium fixtures and inclusions as standard

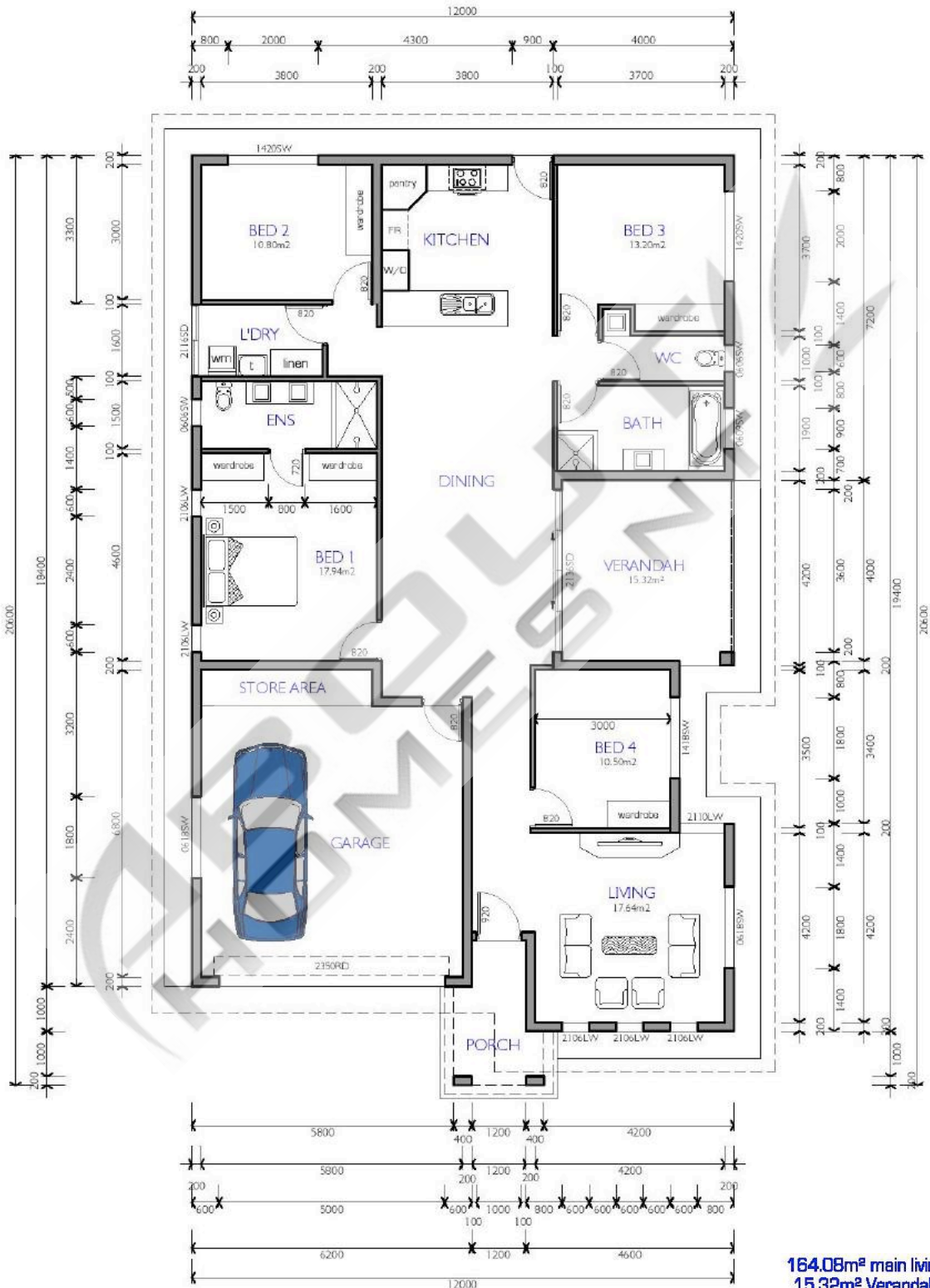
- Rinnai solar hot water system
- DAIKIN inverters throughout
- ALU-GARD security screens
- Smeg kitchen appliances
- Semi-framed shower screens
- Floor to ceiling tiling in bathrooms
- Exposed aggregate concrete all external
- Build-in laundry cabinet
- caesarstone benchtops
- ...and much much more



About Homes NT is your trusted Darwin home builder. We bring over 30 years of building experience to deliver quality homes that are functional and beautiful to Darwin and Palmerston residence.

NARKISSUS 1

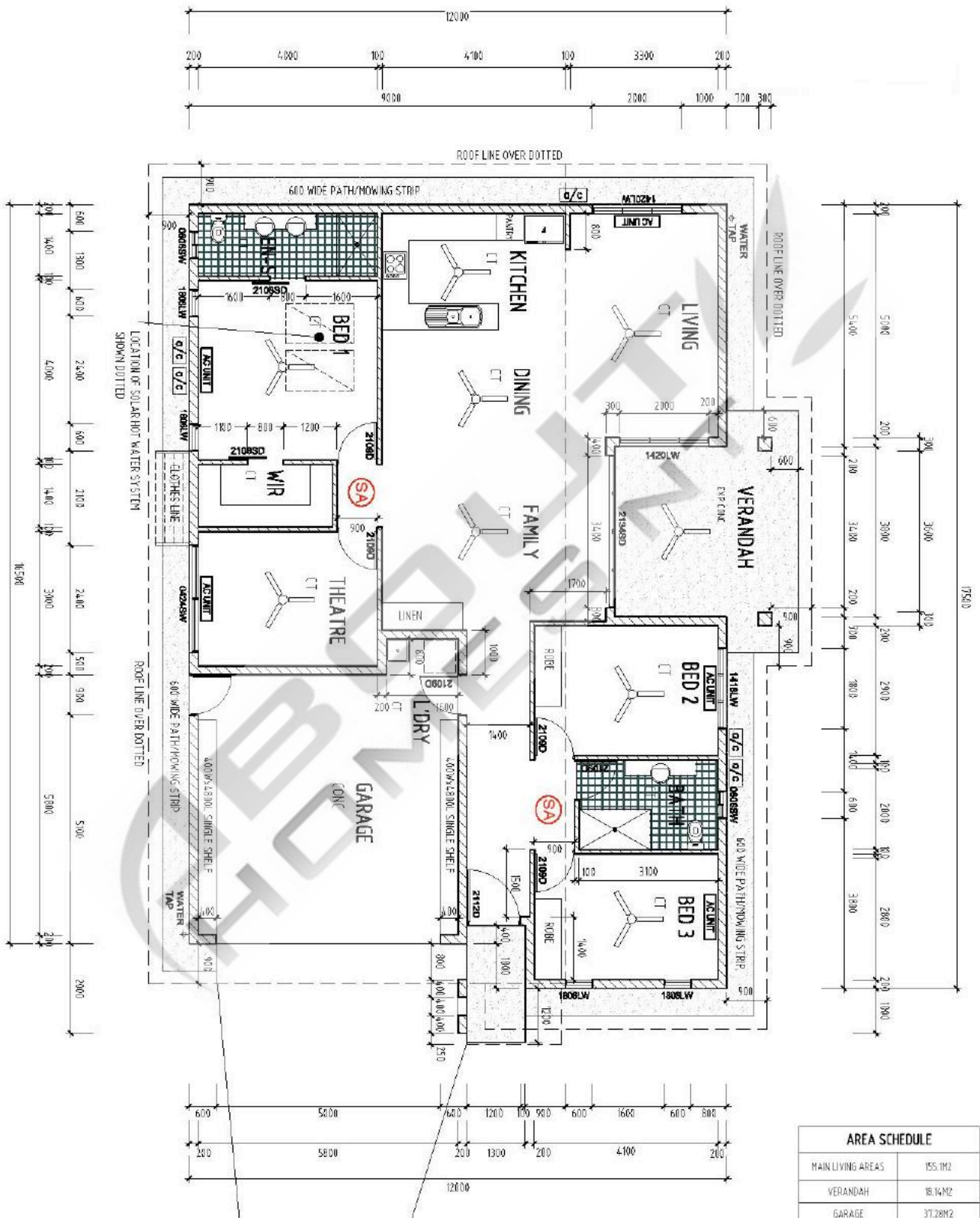
HOUSE WIDTH: 12M - HOUSE LENGTH: 20.6M - TOTAL FLOOR AREA: 225.2M²



164.08m² main living area
15.32m² Verandah Area
40.60m² Carport Area
5.20m² Front Porch Area
225.20m² Total Floor Area

NARKISSUS 2

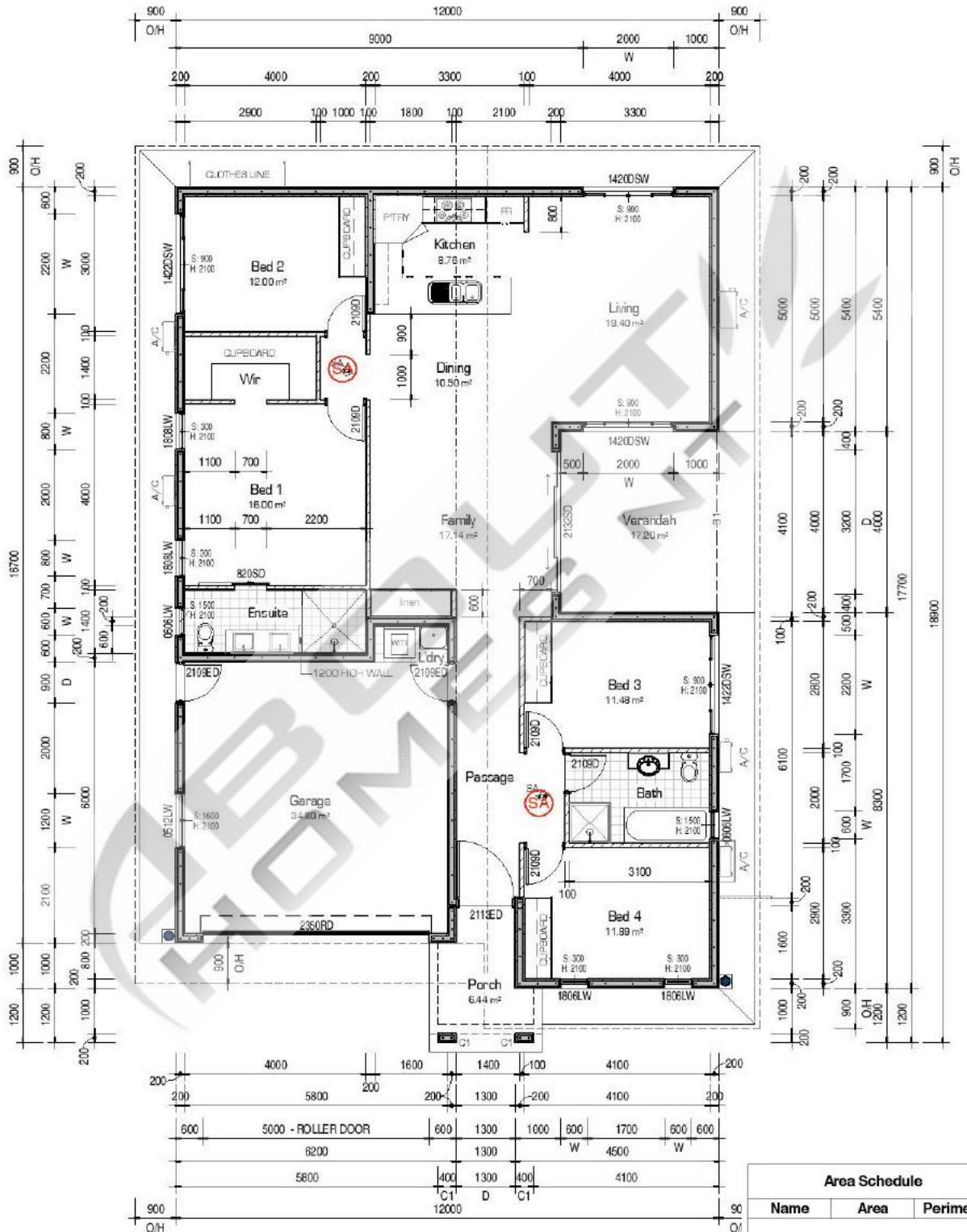
HOUSE WIDTH: 13.5M - HOUSE LENGTH: 17.5M - TOTAL FLOOR AREA: 213.90M²



AREA SCHEDULE	
MAIN LIVING AREAS	155.1M ²
VERANDAH	18.14M ²
GARAGE	37.28M ²
PORCH	3.38M ²
TOTAL	213.90M²

NARKISSUS 3

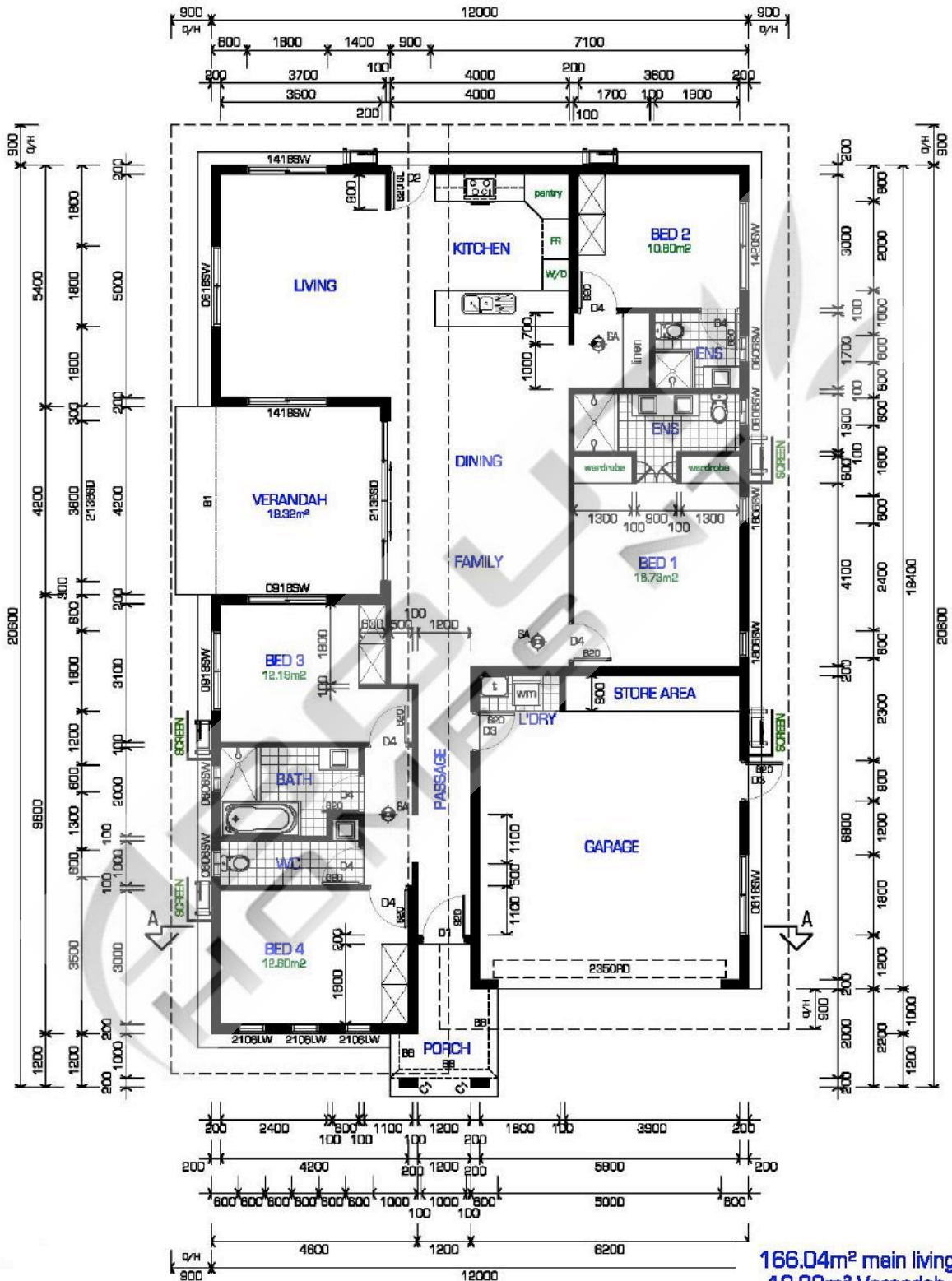
HOUSE WIDTH: 12M - HOUSE LENGTH: 18.9M - TOTAL FLOOR AREA: 213.50M²



Area Schedule		
Name	Area	Perimeter
Main Living	151.189 m ²	68040
Garage	38.672 m ²	26399
Verandah	17.2 m ²	16500
Porch	6.44 m ²	11400
Grand total	213.501 m ²	

MARKISSUS 4

HOUSE WIDTH: 12M - HOUSE LENGTH: 20.6M - TOTAL FLOOR AREA: 233.92M²



166.04m² main living area
19.32m² Verandah Area
42.20m² Garage Area
6.36m² Front Porch Area
233.92m² Total Floor Area