



Premium fixtures and inclusions as standard

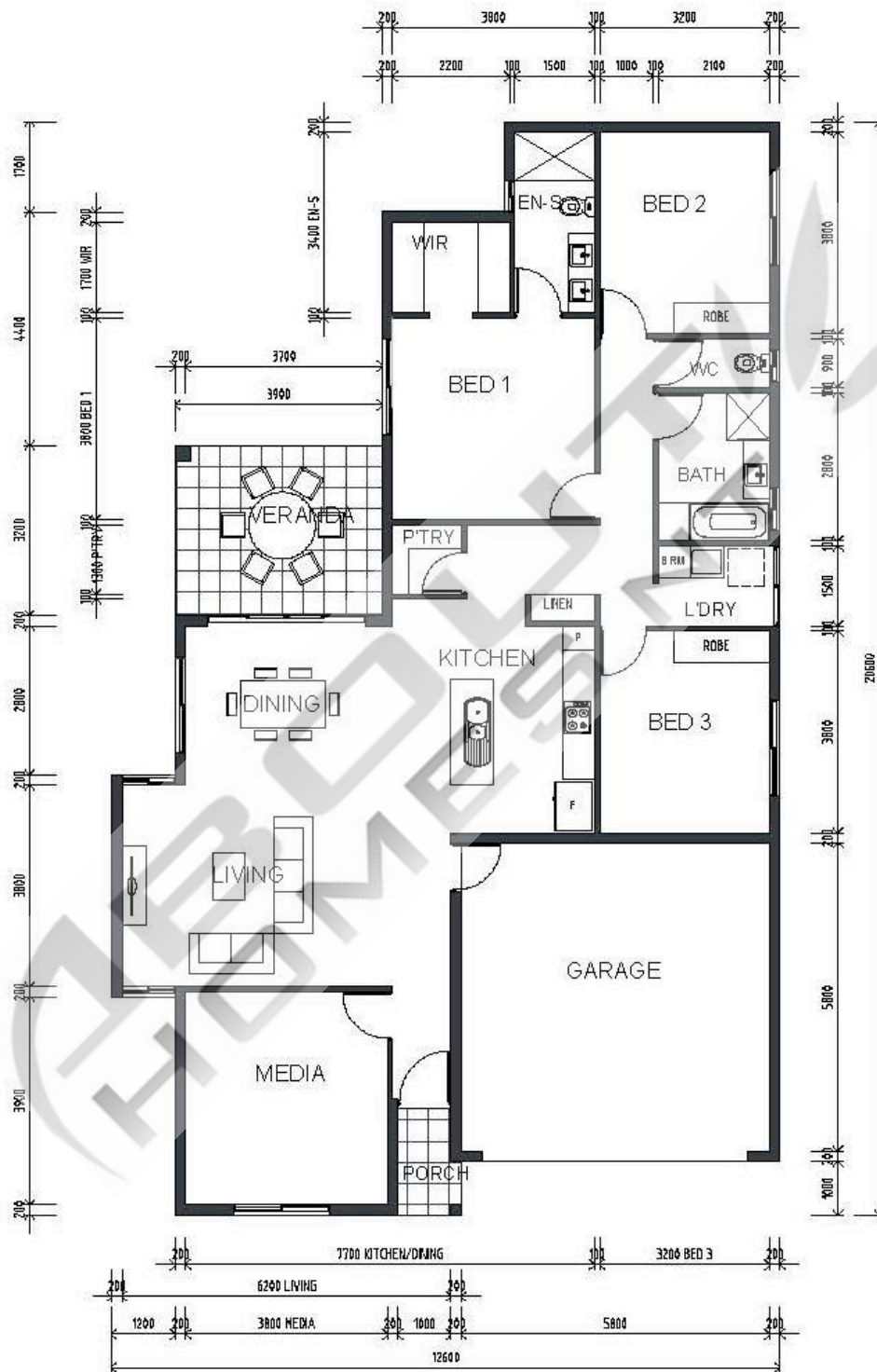
- Rinnai solar hot water system
- DAIKIN inverters throughout
- ALU-GARD security screens
- Smeg kitchen appliances
- Semi-framed shower screens
- Floor to ceiling tiling in bathrooms
- Exposed aggregate concrete all external
- Build-in laundry cabinet
- caesarstone benchtops
- ...and much much more



About Homes NT is your trusted Darwin home builder. We bring over 30 years of building experience to deliver quality homes that are functional and beautiful to Darwin and Palmerston residence.

MALTA 1

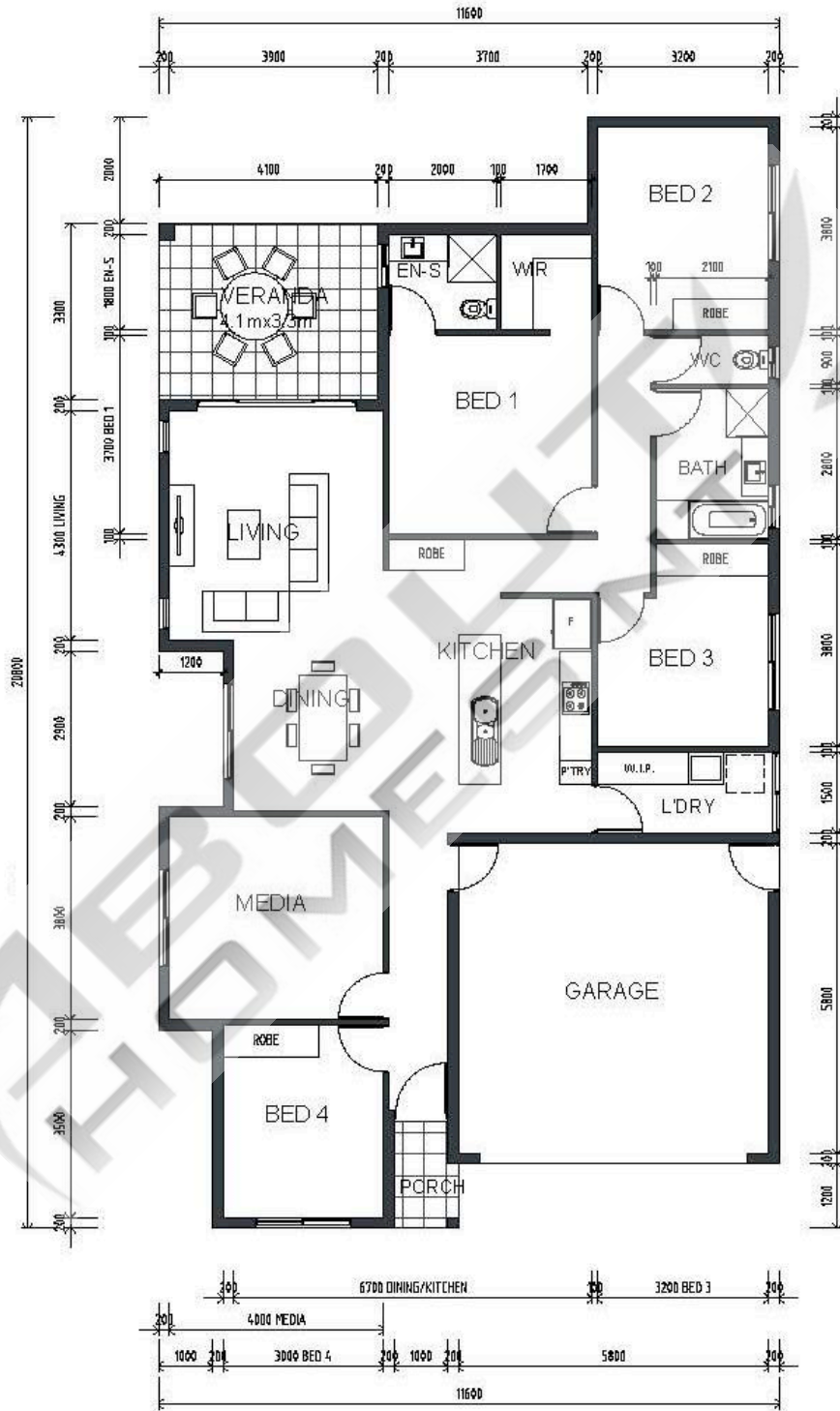
HOUSE WIDTH: 12.6M - HOUSE LENGTH: 20.6M - TOTAL FLOOR AREA: 206.18M²



DIMENSIONS
 LENGTH: 20.6m
 WIDTH: 12.6m
 TOTAL AREA: 206.18m²

MALTA 2

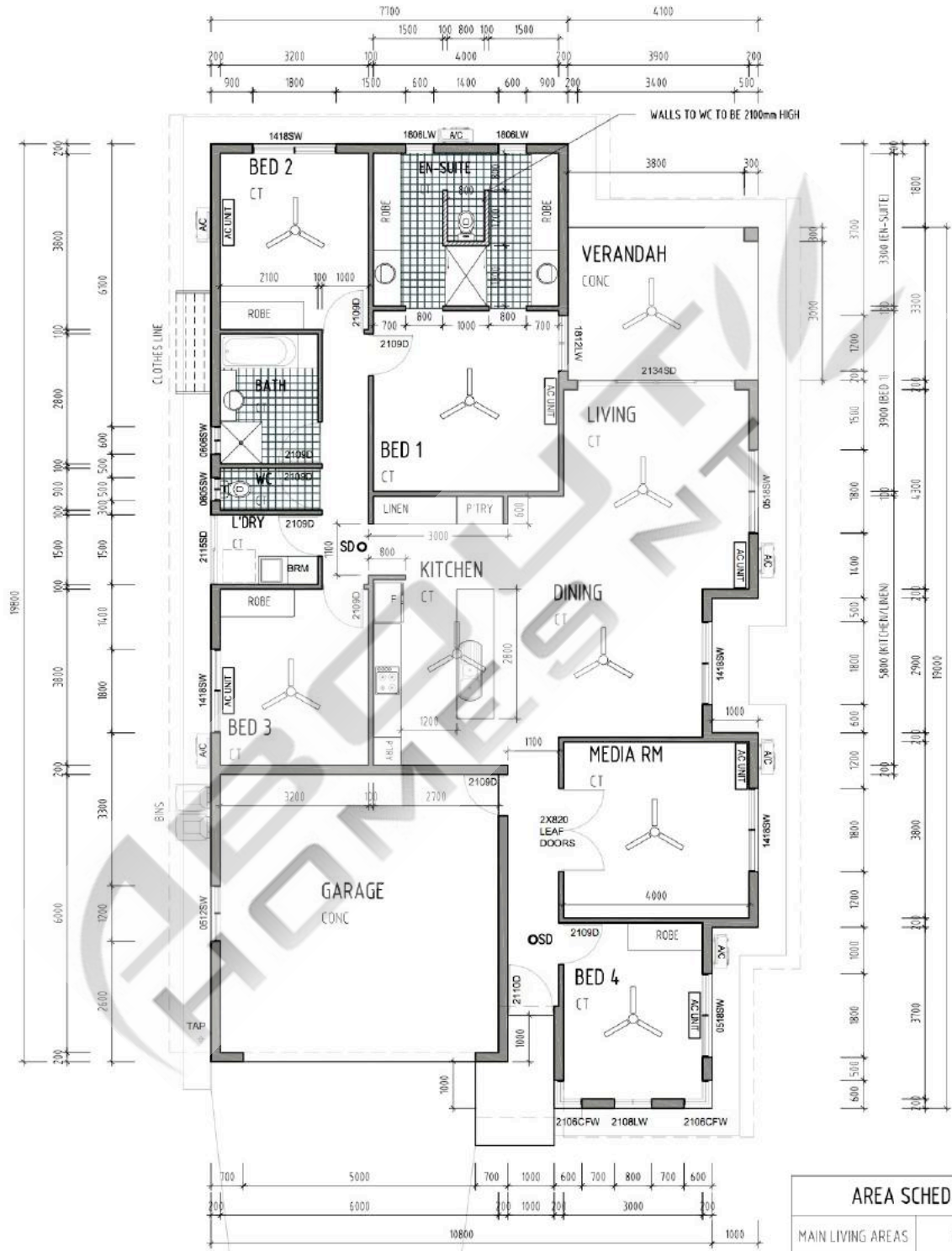
HOUSE WIDTH: 11.6M - HOUSE LENGTH: 20.8M - TOTAL FLOOR AREA: 210.9M²



DIMENSIONS	
LENGTH:	20.8m
WIDTH:	11.6m
TOTAL AREA:	210.9m ²

MALTA 3

HOUSE WIDTH: 11.8M - HOUSE LENGTH: 20.8M - TOTAL FLOOR AREA: 226.56M²



AREA SCHEDULE	
MAIN LIVING AREAS	169.87M ²
VERANDAH	14.19M ²
GARAGE	38.44M ²
PORCH	4.06M ²
TOTAL	226.56M²