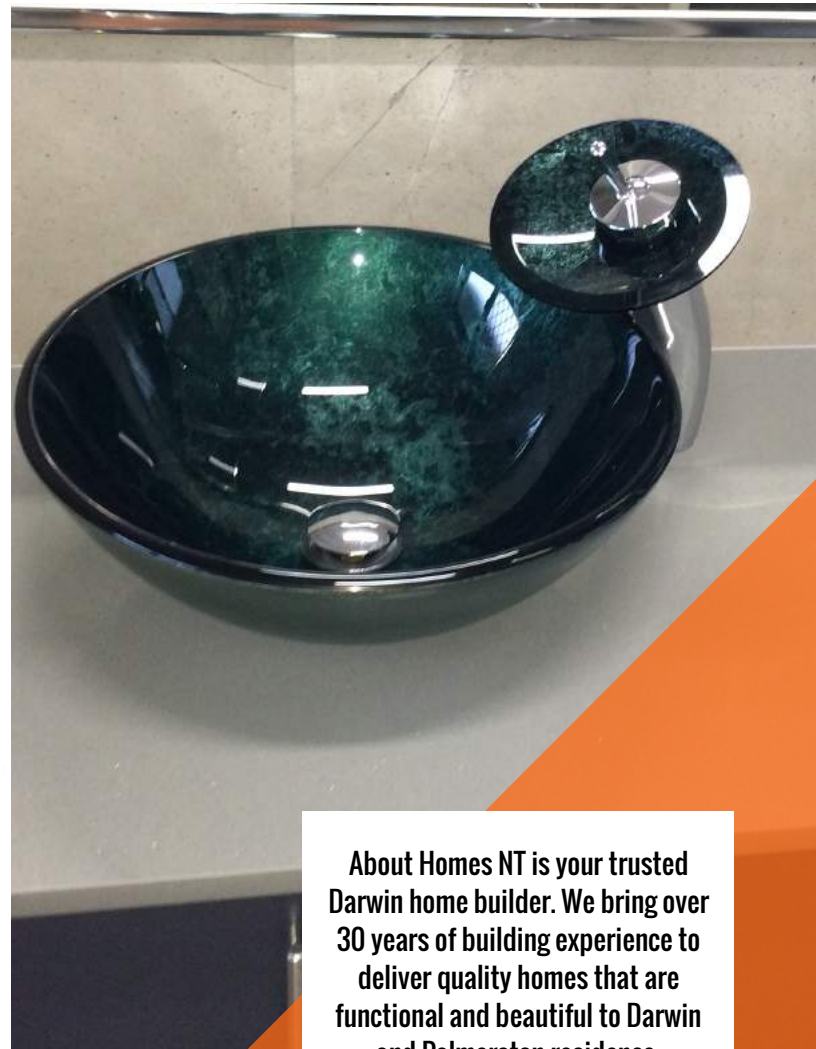
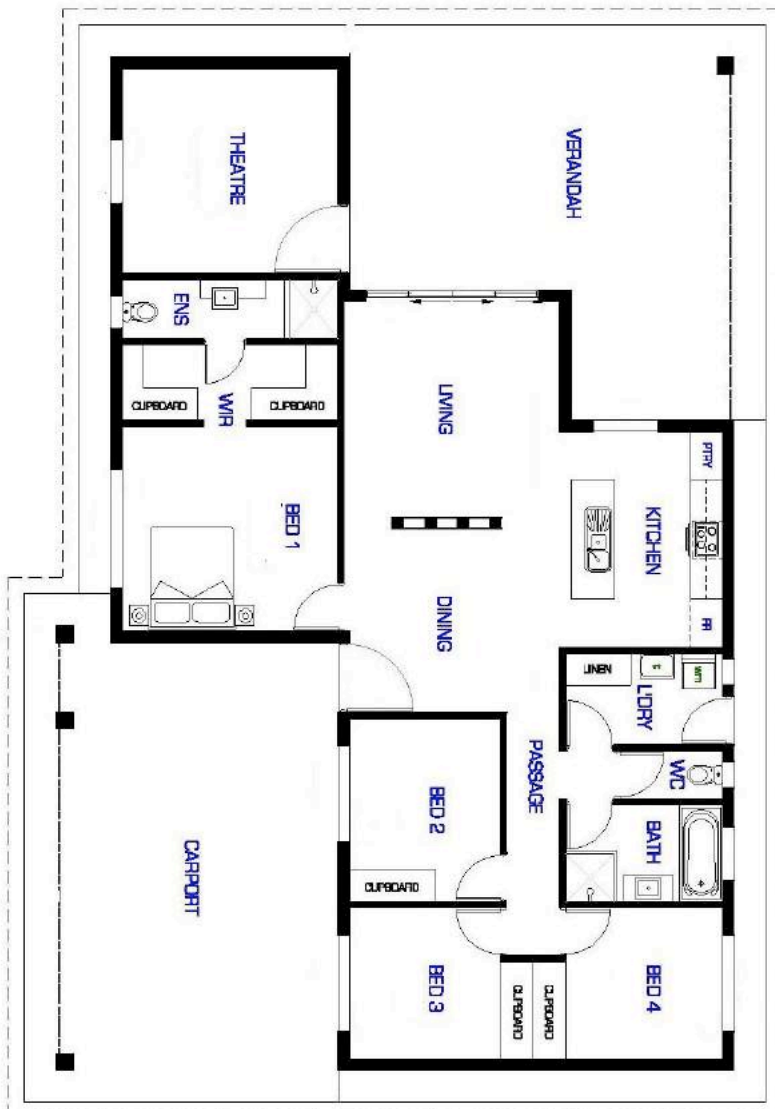


Call us on **89 67 15 84**



Premium fixtures and inclusions as standard

- Rinnai solar hot water system
- DAIKIN inverters throughout
- ALU-GARD security screens
- Smeg kitchen appliances
- Semi-framed shower screens
- Floor to ceiling tiling in bathrooms
- Exposed aggregate concrete all external
- Build-in laundry cabinet
- caesarstone benchtops
- ...and much much more



About Homes NT is your trusted Darwin home builder. We bring over 30 years of building experience to deliver quality homes that are functional and beautiful to Darwin and Palmerston residence.

KENYA 1

HOUSE WIDTH: 18,7m - HOUSE LENGTH: 11,5m - TOTAL FLOOR AREA: 241M²



Area Schedule		
Name	Area	Perimeter
Main Living Area	144 m ²	60400
CARPORY / PORCH	51 m ²	30400
Verandah	46 m ²	30000
Grand total	241 m ²	