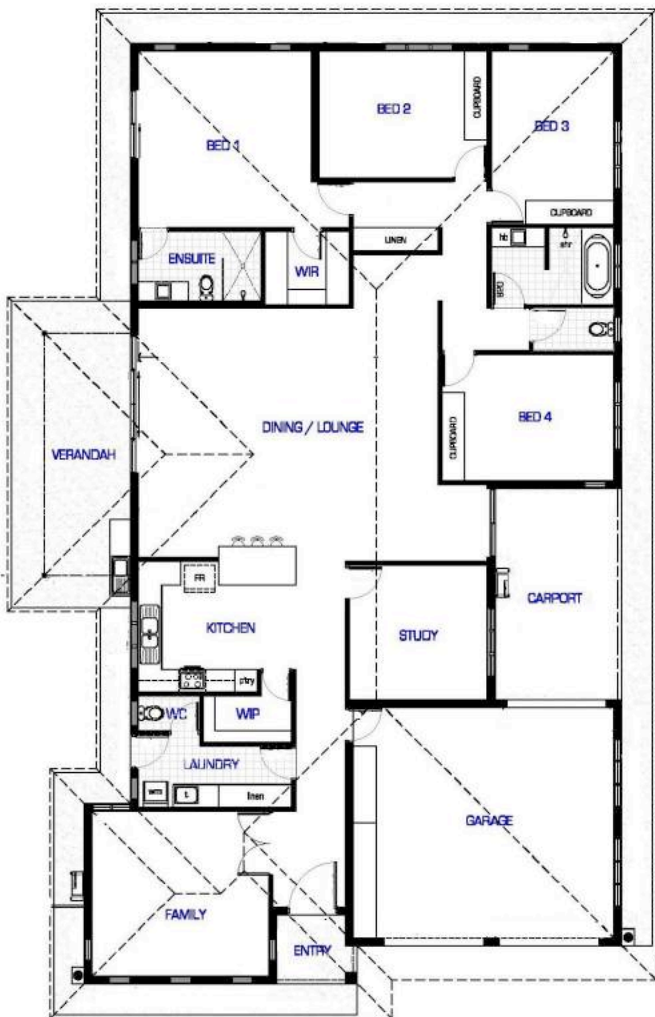




Premium fixtures and inclusions as standard

- Rinnai solar hot water system
- DAIKIN inverters throughout
- ALU-GARD security screens
- Smeg kitchen appliances
- Semi-framed shower screens
- Floor to ceiling tiling in bathrooms
- Exposed aggregate concrete all external
- Build-in laundry cabinet
- caesarstone benchtops
- ...and much much more



About Homes NT is your trusted Darwin home builder. We bring over 30 years of building experience to deliver quality homes that are functional and beautiful to Darwin and Palmerston residence.

EL SANDIAGO 1

HOUSE WIDTH: 15m - HOUSE LENGTH: 24,5m - TOTAL FLOOR AREA: 337,14m²

ABOUT HOMES 4 Bedroom + Study
 COPYRIGHT © ABOUT HOMES Pty Ltd 2018
 www.abouthomes.com.au
 246.43m² Main Living Area
 24.80m² Verandah Area
 62.37m² Garage / Carport Area
 3.54m² Front Porch Entry Area
 337.14m² Total Floor Area

